

Cloud top pressure retrieval with DSCOVER-EPIC oxygen A and B bands observation

Bangsheng Yin¹, Qilong Min^{1,*}, Emily Morgan¹, Yuekui Yang², Alexander Marshak², and Anthony B. Davis³

¹Atmospheric Sciences Research Center, University at Albany, Albany, NY, USA

²NASA Goddard Space Flight Center, Climate and Radiation Laboratory, Greenbelt, MD, USA

³Jet Propulsion Laboratory, California Institute of Technology, Pasadena, CA, USA

* Corresponding author, qmin@albany.edu

Abstract

An analytic transfer inverse model for Earth Polychromatic Imaging Camera (EPIC) observation ~~was~~is proposed to retrieve the cloud top pressure (CTP) with considering in-cloud photon penetration. In this model, an analytic equation was developed to represent the reflection at top of atmosphere (TOA) from above cloud, in-cloud, and below-cloud. The coefficients of this analytic equation can be derived from a series of EPIC simulations under different atmospheric conditions using a non-linear regression algorithm. With estimated cloud pressure thickness, the CTP can be retrieved from EPIC observation data by solving the analytic equation. To simulate the EPIC measurements, a program package using the double-*k* approach was developed. Compared to line-by-line calculation, which this approach can calculate high-accuracy results with a one-hundred-fold computation time reduction. During the retrieval processes, two kinds of retrieval results, i.e., baseline CTP and retrieved CTP, are provided. The baseline CTP is derived without considering in-cloud photon penetration, and the retrieved CTP is derived by solving the analytic equation, taking into consideration the in-cloud and below-cloud interactions. The retrieved CTP for the oxygen A and B bands are smaller than their related baseline CTP. At the same time, both baseline CTP and retrieved CTP at the oxygen B-band are ~~obviously~~ larger than those at the oxygen A-band. Compared to the difference of baseline CTP between the B-band and A-band, the difference of retrieved CTP between these two bands is generally reduced. Out of around 10000 cases, in retrieved CTP between A- and B-bands we found an average bias of 93 mb with standard deviation of 81 mb. The cloud layer top pressure from Cloud-Aerosol Lidar and Infrared Pathfinder Satellite Observations measurements is used to do validation. Under single-layer cloud situations, the retrieved CTPs for the oxygen A-band agree well with the CTPs from CALIPSO, which mean difference is within 5 mb in the case study. Under multiple-layer cloud situations, the CTPs derived from EPIC measurements may be larger than the CTPs of high level thin-clouds due to the effect of photon penetration.

1. Introduction

The Deep-Space Climate Observatory (DSCOVR) satellite is an observation platform orbiting within the first Sun-Earth Lagrange point (L1), 1.5 million km from the Earth, carrying a suite of instruments oriented both Earthward and sunward. One of the Earthward instruments is the Earth Polychromatic Imaging Camera (EPIC) sensor, which can take images of the Earth with spatial resolution of 10 km at nadir. The EPIC continuously monitors the entire sunlit Earth for backscatter, with a nearly constant scattering angle between 168.5° and 175.5°, from sunrise to sunset with 10 narrowband filters: 317, 325, 340, 388, 443, 552, 680, 688, 764 and 779 nm (Marshak et al., 2018). Of the 10 narrow-band channels, there are two oxygen absorption and reference pairs, 764nm versus 779.5nm and 680nm versus 687.75nm, for oxygen A and B bands. The cloud top pressure (CTP) or cloud top height (CTH) is an important cloud property for climate and weather studies. Based on differential oxygen absorption, both EPIC oxygen A-band and B-band pairs can be used to retrieve CTP. It is worth noting that although CTP and CTH reference the same characteristic of clouds, the conversion between the two depends on their related atmospheric profiles.

Although the theory of using oxygen absorption bands to retrieve CTP was proposed decades ago (Yamamoto and Wark, 1961), it is still very challenging to do the retrieval accurately due to the complicated in-cloud penetration effect (Yang et al., 2019, 2013; Davis et al., 2018a, 2018b; Richardson and Stephens, 2018; Loyola et al., 2018; Lelli et al., 2014, 2012; Schuessler et al., 2013; Rozanov and Kokhanovsky, 2004; Kokhanovsky and Rozanov, 2004; Kuze and Chance, 1994; O'brien and Mitchell, 1992; Fischer and Grassl, 1991; and etc.). To estimate the CTP from satellite measurements, Many-many approaches are-have been designed to retrieve clouds' effective top pressures without considering their in-cloud photon penetration. These approaches did not consider light penetrating cloud, and therefore the derived CTH is lower than the cloud top, derive and the effective top pressures is higher than CTP. In the meantime, to improve the retrieval accuracy of CTP, various techniques have been applied to the retrieval methods with in-cloud photon penetration. For example, Kokhanovsky and Rozanov (2004) proposed a simple semi-analytical model for calculation of the top-of-atmosphere (TOA) reflectance of an underlying surface-atmosphere system, accounting both for aerosol and cloud scattering. Based on the work of Kokhanovsky and Rozanov (2004), Rozanov and Kokhanovsky (2004) developed an asymptotic algorithm for the CTH and the geometrical thickness determination using measurements of the cloud reflection function. This retrieval method was applied by Lelli et al. (2012, 2014) to derive CTH using measurements from GOME instrument on board the ESA ERS-2 space platform.

Currently, based on the measurements of DSCOVR EPIC sensor, the Atmospheric Science Data Center (ASDC) at National Aeronautics and Space Administration (NASA) Langley Research Center archives both calibrated EPIC reflectance ratio data and processed Level 2 cloud retrieval products, including cloud cover, cloud optical depth (COD), cloud effective top pressure at oxygen A and B bands (Yang et al., 2019). By using EPIC reflectance ratio data at oxygen A-band and B-band absorption to reference channels, Yang et al (2013) developed a method to retrieve CTH and cloud geometrical thickness simultaneously for fully cloudy scene over ocean surface. First their method calculates cloud centroid heights for both A- and B-band channels using the ratios between the reflectance of the absorption and reference channels, then derives the CTH and the cloud geometrical thickness from the two dimensional look up tables that relate the sum and the difference between the retrieved centroid heights for A- and B-bands

to the CTH and the cloud geometrical thickness. The difference in the O₂ A- and B-band cloud centroid heights is resulted from the different penetration depths of the two bands. Compared to the cloud height variability, the penetration depth differences are much smaller and the retrieval accuracy from this method can be affected by the instrument noise (Davis et al. 2018a, b).

In this paper, to address the issue of in-cloud penetration, we proposed an analytic method to retrieve the CTP by using DSCOVER EPIC oxygen A- and B-band observation. This analytical method adopted ideas of the semi-analytical model (Kokhanovsky and Rozanov, 2004; Rozanov and Kokhanovsky, 2004), and developed a quadratic EPIC analytic radiative transfer equation to analyze the radiative transfer in oxygen A- and B-band channels. The structure of this paper is as follows: section 2 describes the theory and methods, which includes several subsections, i.e., the introduction of absorption-optical-depth-spectrum at oxygen A and B bands with their related DSCOVER EPIC oxygen A and B bands filters, the theory of CTP retrieval based on EPIC oxygen A- and B- band observation, and the detailed retrieval algorithm; section 3 describes the application and validation of the CTP retrieval method, which also includes several subsections, i.e., case studies of CTP retrieval, validation of the retrieval method, and retrieval of global observation; ~~states the theory of CTP retrieval based on EPIC oxygen A-band and B-band observation,~~ section 4 ~~describes the retrieval algorithms in detail with case studies and examples of global observation data retrieval,~~ and section ~~5-4~~ states the conclusions of this study.

2. Theory and methods

2.1 DSCOVER EPIC oxygen A and B bands filters

EPIC filters at 764 nm and 779 nm cover the oxygen A-band absorption and reference bands, respectively (Figure 1a). The high resolution absorption optical depth spectrum at oxygen A-band and B-band is calculated by Line-By-Line Radiative Transfer Model (LBLRTM, Clough et al., 2005) with HITRAN 2016 database (Gordon et al., 2017) for the U.S. standard atmosphere. In this wavelength range, the O₃ absorption is very weak (O₃ optical depth < 0.003) and there are no other gas absorptions. The background aerosol and Rayleigh scattering optical depth vary smoothly within the A-band range; the differences between in-band and reference band are negligible at nominal EPIC response functions. EPIC filters at 688 nm and 680 nm cover the oxygen B-band absorption and reference band, respectively (Figure 1b). Compared to the oxygen A-band, O₃ absorption is slightly stronger in the oxygen B-band range, with an O₃ optical depth around 0.01. Any water vapor absorption in the B-band range is negligible. In the standard atmospheric model, from the oxygen B-band reference band to the absorption band, the O₃ absorption and Rayleigh scattering optical depth decreased by approximately 0.002 and 0.002, respectively. This may have some impacts on the CTP retrieval from the oxygen B-band (more discussion in the later sections). It is worth noting that for EPIC measurements at both oxygen A- and B-bands, the surface influence cannot be ignoredis non-ignorable. For examples, in the snow or ice covered area the surface albedo is high; in the plants covered area, the surface albedo changes substantially between oxygen A-band and B-band due to the impact of spectral red-edge (Seager et al., 2005).

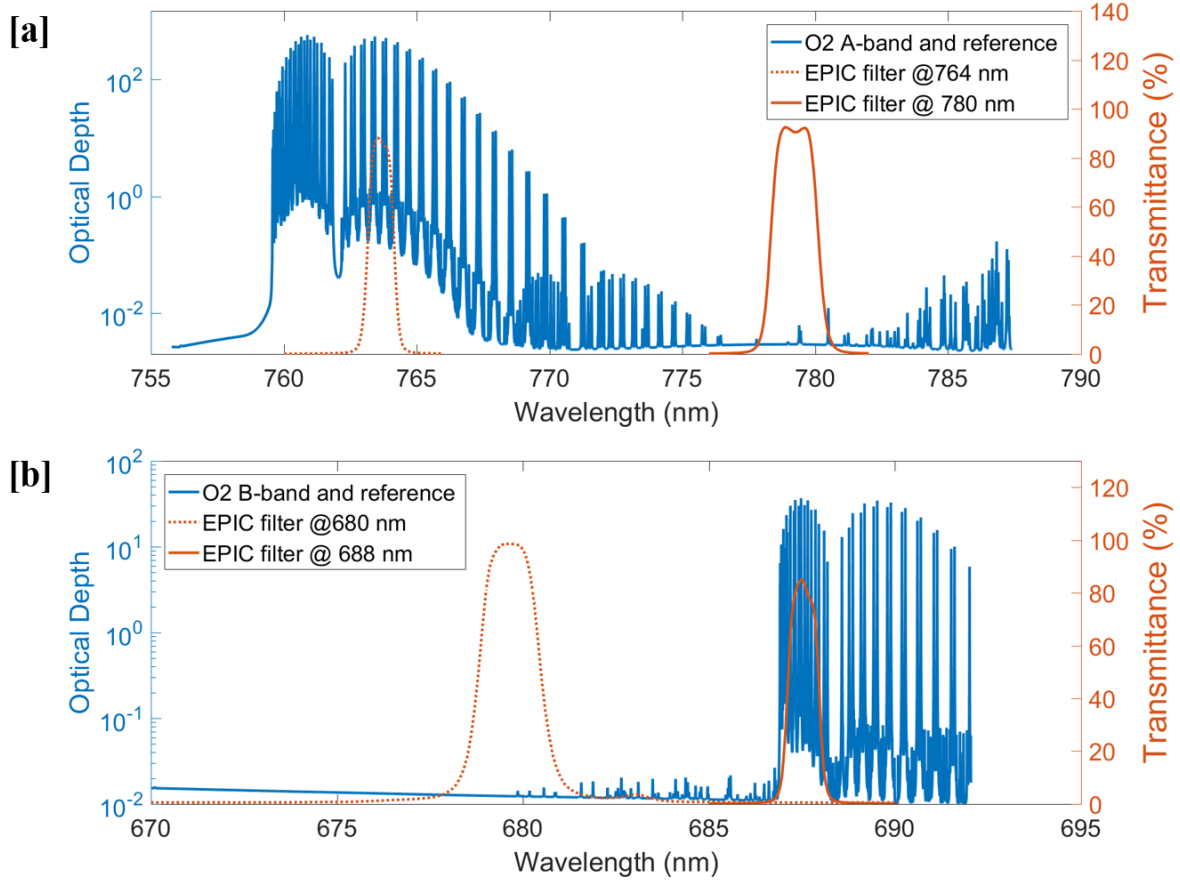


Figure 1: High resolution calculated absorption optical depth spectrum at oxygen A-band (a) and B-band (b) with DSCOVr EPIC oxygen A and B bands in-band and reference filters. [Here the absorption optical depth spectrum is calculated by LBLRTM model with HITRAN 2016 database for the U.S. standard atmosphere.](#)

In general, if we use the pair of oxygen A and B absorption and reference bands together, the impact of other absorption lines, background Rayleigh scattering, and aerosol optical depth are very limited. At the same time, as a well-mixed major atmospheric component, the vertical distribution of oxygen in the atmosphere is very stable under varying atmospheric conditions. Thus, we can use the ratio of reflected radiance (or reflectance) at the top of atmosphere (TOA) of oxygen absorption and reference bands (*i.e.*, R_{764} and R_{779} , R_{688} and R_{680}) to study the photon path length distribution and derive the cloud information. Also, compared to any specific EPIC oxygen absorption bands (*i.e.*, R_{764} and R_{688}), the ratios of absorption to reference channels (*i.e.*, R_{764}/R_{779} and R_{688}/R_{680}) are less impacted by the instrument calibration and other measurement error. This can be explained by the following reasons: First, the EPIC measurements at oxygen A and B absorption and reference bands share same sensor and optical system, when calculating the ratios of them, some preprocessing calibration errors can be reduced. Second, to calculate R_{764} and R_{688} , the ratio of lunar reflectance at neighboring channels (*i.e.*, $F(764, 779)$ and $F(688, 680)$) and the calibration factors of oxygen A and B reference bands (*i.e.*, K_{779} and K_{680}) are used (Geogdzhayev and Marshak, 2018; Marshak et al., 2018). Therefore, the accuracy of R_{764} and R_{688} is determined by the stability of $F(764, 779)$

and $F(688,680)$ and the accuracy of K_{779} and K_{680} together. But the accuracy of ratios of absorption to reference ratios is only determined by the stability of $F(764,779)$ and $F(688,680)$.

2.2 Theory of CTP retrieval based on EPIC oxygen A- and B- band observation

In our study, we tried two methods to retrieve the CTP based on EPIC oxygen A-band and B-band measurements: (1) Build a lookup table (LUT) for various atmospheric conditions and do the retrieval by searching the LUT; (2) Develop an analytic transfer inverse model for EPIC observations and calculate the related coefficients based on a series of simulated values, then use this analytic transfer inverse model to retrieve the CTP. In this paper, we mainly focus on the second method.

32.2.1 Method 1: LUT based approach

One commonly used method of retrieval for satellite observation is through the building and usage of LUTs (Loyola et al., 2018, Gastellu-Etchegorry and Esteve, 2003). LUT based approach can be fast because the most computationally expensive part of the inversion procedure is completed before the retrieval itself. For DSCOVER EPIC observations, we can build ~~a~~-LUTs by simulating ~~the~~ EPIC measurements under various atmospheric conditions, such as different surface albedo, solar zenith and viewing angles, ~~cloud optical depth~~COD, CTP, and cloud pressure thickness. Comparing the related simulated reflectance at the oxygen absorption and reference bands, we can obtain two LUTs for reflectance ratios of absorption/reference at EPIC oxygen A-band and B-band respectively, which can be used for the CTP retrieval. The detailed information of simulated reflectance ratio of absorption/reference is stated in Section 2.3.3.

During the retrieval process, the EPIC measurements (e.g., reflectance at oxygen A and B bands) with related solar zenith and viewing angles can be obtained from the EPIC level 1B data; ~~cloud optical depth~~COD information (retrieved from other EPIC channels) can be obtained from EPIC level 2 data. At the same time, we can get surface albedo from Global Ozone Monitoring Experiment 2 (GOME-2) Surface Lambertian-equivalent reflectivity (LER) data (Tilstra et al., 2017). At this point the CTP and cloud pressure thickness are the only unknown variables. The cloud pressure thickness or the cloud vertical distribution has substantial impact on the accuracy of the CTP retrievals (Carbajal Henken et al., 2015; Fischer and Grassl, 1991; Rozanov and Kokhanovsky, 2004; Preusker and Lindstrot, 2009). In this study, the cloud pressure thickness is used as an input parameter to retrieve the CTP. However, no related accurate cloud pressure thickness is provided by other satellite sensors now. To constrain the error ~~off~~from the estimation of cloud pressure thickness, we related it to the cloud optical thickness. It is reasonable because clouds with higher optical thickness normally have higher values of pressure thickness. To explore the correlation between cloud pressure thickness and cloud optical thickness, we use the related cloud data from Modern-Era Retrospective analysis for Research and Applications Version 2 (MERRA-2, Gelaro et al., 2017), which is a NASA atmospheric reanalysis for the satellite era using the Goddard Earth Observing System Model Version 5 (GEOS-5) with Atmospheric Data Assimilation System (ADAS). Based on statistical analysis of one year's single-layer liquid water clouds over an oceanic region (S23.20, W170.86, S2.11, W144.14) in

2017, we can get an equation for cloud pressure thickness approximation, i.e., cloud pressure thickness (mb) = 2.5* COD + 23. The derived correlation coefficients ~~is~~ are dependent on the case region and time selections. ~~In the meantime, d~~Due to the complexity of cloud vertical distribution ~~in the atmosphere~~, whatever the accuracy of the correlation coefficients is, the estimation will certainly bring in error. ~~Cloud pressure thickness can be estimated with cloud optical thickness using statistical rules.~~

With an estimated cloud pressure thickness, ~~A~~a multi-variable LUT searching method can then be used to interpolate and obtain the CTP. It is worth noting that the reflectance ratio of absorption/reference can be seen as a function of surface albedo, solar zenith and viewing angles, COD, CTP, and cloud pressure thickness. ~~certain~~ Some atmospheric variables will have a non-linear effect on the reflectance ratio. For example, the reflectance ratio is more sensitive to the variation of COD when COD is small. Overall, the reflectance ratio varies monotonically and smoothly with these variables (shown in Figure 3). ~~EPIC observations, however, these variations occur smoothly.~~ With a relatively high-resolution simulated table, we can use a localized linear interpolation method to estimate the proper values. Multiple interpolations are needed for this method to decrease the number of LUT dimensions, which will cost more time than the analytic transfer ~~inverse~~ model method. The retrieval error of this method is determined by the resolution of the LUT, i.e., the higher the resolution, the higher retrieval accuracy. However, for multiple dimensional LUTs, the increase of resolution will increase the table size exponentially, which will increase computational cost substantially for the table building and inverse searching. Another possible method to increase the retrieval accuracy is using different interpolation methods. For example, if the value of LUT varies non-linearly with a variable, using high order interpolation method maybe better than using linear interpolation method (Dannenberg, 1998). ~~In physics, the retrieval accuracy is impacted by two main uncertainty sources: (1) the limited ability of EPIC in identifying cloud thermodynamic phase, which will affect the accuracy of cloud optical thickness retrieval, and 2) the uncertainty in estimating Cloud pressure.~~

2.23.2 Method 2: Analytic transfer ~~inverse~~ model

For a long time, various efforts have been devoted to the study of radiative transfer in the atmosphere, including scattering, absorption, emission, and etc. (Chandrasekhar, 1960; Irvine 1964; Ivanov and Gutshabash 1974; van de Hulst, 1980, 2012; Ishimaru, 1999; Thomas and Stamnes, 2002; Davis and Marshak, 2002; Kokhanovsky et al., 2003; Marshak and Davis, 2005; Pandey et al., 2012; and etc.). In this study, we ~~are trying to~~ develop an analytic radiative transfer equation to analyze the radiative transfer at oxygen A and B bands. Through solving the analytic equation, we can retrieve the CTP information directly. The theory of CTP retrieval is similar for EPIC oxygen A-band and B-band observation. Here we use oxygen A-band as an example to study the radiative transfer model. For oxygen A-band, photon path length distribution is capable of describing vital information related to a variety of cloud and atmospheric characteristics.

$$I_v(\mu, \varphi; \mu_0, \varphi_0) = I_0(\mu, \varphi; \mu_0, \varphi_0) \int_0^\infty p(l, \mu, \varphi; \mu_0, \varphi_0) e^{-\kappa_v l} dl \quad (1)$$

Where, $p(l)$ is photon path length distribution, κ_v is the gaseous absorption coefficient at wave number v , $\mu = \cos(\theta)$, $\mu_0 = \cos(\theta_0)$, $(\theta, \varphi; \theta_0, \varphi_0)$ are zenith and azimuth angles for solar and

sensor view respectively, I_0 and I_v are incident solar radiation and sensor measured solar radiation, respectively.

When clouds exist, the incident solar radiation is reflected to ~~outer-space~~TOA in three primary ways. First, incident solar radiation is reflected by cloud top layer directly as a result of single scattering. Second, the incident solar radiation will penetrate into the cloud and be reflected back to TOA through cloud top via multiple scattering. Third, the incident solar radiation will pass through the cloud and arrive at the surface, after that it is reflected back into the cloud and finally scattered back to TOA through the cloud top. Due to the position of the EPIC instrument and the long distance between EPIC and Earth, we can consider that solar zenith angle and sensor view angle are nearly reverse. At oxygen A-band, the reflected solar radiation will be reduced due to oxygen absorption depending on photon path length distributions. Absorption is negligible in oxygen A-band's reference band. ~~For solar radiation at oxygen-Oxygen~~ A-band and its reference band, ~~they~~ are also attenuated by airmass and aerosol ~~that located above or below cloud~~ through Rayleigh scattering and aerosol extinction. In the standard atmospheric model, the optical depth of Rayleigh scattering (τ_{Ray}) at oxygen A-band (B-band) and its reference band is 0.026 (0.040) and 0.024 (0.042), respectively (Bodhaine et al., 1999). The absolute difference of Rayleigh scattering optical depth ($\Delta\tau_{Ray} = \tau_{Ray}^{In-band} - \tau_{Ray}^{Ref}$) between them is within 0.002. Compared to Rayleigh scattering, the difference of background aerosol optical depth ($\Delta\tau_{Aer}$) between ~~in-band~~absorbing and reference bands is smaller, within 0.0005. ~~However~~Therefore, their attenuations from Rayleigh scattering and aerosol extinction at EPIC oxygen absorption and its reference band are close to each other. Thus, ~~we can~~when we use the ratio of EPIC measured reflectance at oxygen A-band and its reference band to derive the photon path length distribution and retrieve cloud information such as CTP, the impact of Rayleigh scattering and aerosol extinction can be simplified in the analytic transfer inverse model. and then retrieve cloud information such as CTP.

To simplify the analytic transfer inverse model for EPIC observations, we made a series of assumptions, e.g., isotropic component, a plane-parallel homogenous cloud assumption with quasi-Lambertian reflecting surfaces, ~~and etc.~~ These assumptions have been widely used in radiative transfer calculation for cloud studies. In this model, μ and μ_0 are the same as in ~~Equation-Eq. (1)~~, φ is the relative azimuth angle between ~~solar-Sun~~ and satellite sensors; A_{surf} is the surface albedo; $\tau_{O_2}^{Top}$, $\tau_{O_2}^{Base}$, and $\tau_{O_2}^{Surface}$ are oxygen A-band absorption optical depth from TOA to cloud top layer, cloud bottom layer, and surface, respectively; $\Delta\tau_{O_2}^{Above-Cld}$, $\Delta\tau_{O_2}^{In-Cld}$ and $\Delta\tau_{O_2}^{Below-Cld}$ are layered oxygen A-band absorption optical depth above cloud, in cloud, and below-cloud, respectively; functions f mean their contribution to the ratio of measured reflectance at oxygen A-band (R_A) and reference band (R_f). The detailed analysis of EPIC analytic transfer inverse model is shown as follows:

(1) **Above Cloud:** the reflected solar radiation is determined by the oxygen absorption optical depth above the cloud and air mass directly.

$$\begin{aligned} f(\Delta\tau_{O_2}^{Above-Cld}, \mu_0, \mu, \varphi) &= f(\Delta\tau_{O_2}^{Above-Cld})f(\mu_0, \mu, \varphi) \\ &= a_0 \tau_{O_2}^{Top} \left(\frac{1}{\mu} + \frac{1}{\mu_0} \right) \end{aligned} \quad (2)$$

Here, a_0 is a weight coefficient.

(2) **Within Cloud:** the reflected solar radiation is not only determined by oxygen absorption optical depth above cloud and in-cloud, but also by penetration related factors, e.g., [cloud optical depth COD](#). Due to photon penetration, oxygen parameter $\tau_{O_2}^{Top}$ influences the enhanced path length absorption:

$$\Delta\tau_{O_2}^{In-Cloud} = \tau_{O_2}^{Base} - \tau_{O_2}^{Top} \quad (3)$$

Equivalence theorem (Irvine, 1964; Ivanov and Gutshabash, 1974; van de Hulst 1980) is used to separate absorption from scattering:

$$\begin{aligned} f(\tau_{O_2}^{Top}, \Delta\tau_{O_2}^{In-Cloud}, \mu_0, \mu, \varphi) &= f(\tau_{O_2}^{Top}, \Delta\tau_{O_2}^{In-Cloud})f(\mu_0, \mu, \varphi) \\ &= f(\tau_{O_2}^{Top})f_1(\mu_0, \mu, \varphi) + f(\Delta\tau_{O_2}^{In-Cloud})f_2(\mu_0, \mu, \varphi) \end{aligned} \quad (4)$$

$f(\tau_{O_2}^{Top})$ is determined by two absorption dependences: strong ($\sim \sqrt{\tau_{O_2}^{Top}}$) and weak ($\sim \tau_{O_2}^{Top}$).

$$f(\tau_{O_2}^{Top}) = a_1 \sqrt{\tau_{O_2}^{Top}} + b_1(\tau_{O_2}^{Top}) \quad (5)$$

Based on asymptotic approximation (Kokhanovsky *et al.*, 2003; Pandey *et al.*, 2012), the reflection of a cloud without considering below cloud interaction is given by [Equation-Eq. \(6\)](#):

$$\begin{aligned} R(\tau, \mu, \mu_0, T) &= R_0^\infty(\tau, \mu, \mu_0) - TK(\mu)K(\mu_0) \\ &= R_0^\infty(\tau, f_1(\mu, \mu_0)) - Tf_2(\mu, \mu_0) \end{aligned} \quad (6)$$

Here, R_0^∞ is the reflectance of a semi-infinite cloud, $K(\mu)$ is the escape function of μ , T is global transmittance of a cloud. T can be estimated by [Equation-Eq. \(7\)](#), with the cloud optical thickness τ_{cld} , the asymmetry parameter, and [a numerical constant](#) $\alpha = 1.07$ ~~a numerical constant~~.

$$T = \frac{1}{0.75\tau_{cld}(1-g)+\alpha} \quad (7)$$

f_1 and f_2 functions have a quadratic form as follows:

$$f_{i-1} = a_i T + b_i(\mu + \mu_0) + c_i T(\mu + \mu_0) + d_i \mu \mu_0, i = 2, 3 \quad (8)$$

Combining [Equations. \(4\), \(5\) and \(8\)](#), we can get the [equation-Eq. \(9\)](#):

$$\begin{aligned} f(\tau_{O_2}^{Top}, \Delta\tau_{O_2}^{In-Cloud}, \mu_0, \mu, \varphi) &= \left(a_1 \sqrt{\tau_{O_2}^{Top}} + b_1(\tau_{O_2}^{Top}) \right) (a_2 T + b_2(\mu + \mu_0) + c_2 T(\mu + \mu_0) + d_2 \mu \mu_0) \\ &\quad + \Delta\tau_{O_2}^{In-Cloud} (a_3 T + b_3(\mu + \mu_0) + c_3 T(\mu + \mu_0) + d_3 \mu \mu_0) \end{aligned} \quad (9)$$

(3) **Below Cloud:** The equivalence theorem used for below cloud is similar to within cloud (Kokhanovsky *et al.*, 2003; Pandey *et al.*, 2012).

$$\begin{aligned} f(\Delta\tau_{O_2}^{Below-Cloud}, \mu_0, \mu, \varphi) &= T \tau_{O_2}^{Surface} \frac{A_{Surf}}{1+(e_4*T+f_4)*A_{Surf}} \\ &\quad * (a_4 T + b_4(\mu + \mu_0) + c_4 T(\mu + \mu_0) + d_4 \mu \mu_0) \end{aligned} \quad (10)$$

Combining Equations (2), (9) and (10), we can get the total EPIC analytic transfer equation as follows

$$-\log\left(\frac{R_A}{R_f}\right) = f(\Delta\tau_{O2}^{Above-Cloud}, \mu_0, \mu, \varphi) + f(\tau_{O2}^{Top}, \Delta\tau_{O2}^{Cloud}, \mu_0, \mu, \varphi) + f(\Delta\tau_{O2}^{Below-Cloud}, \mu_0, \mu, \varphi) + \Delta\tau_{BG} \left(\frac{1}{\mu} + \frac{1}{\mu_0}\right) \quad (11)$$

In Equation (11), $\Delta\tau_{BG}$ represents the sum of optical depth difference of background extinction (i.e., Rayleigh scattering $\Delta\tau_{Ray}$, aerosol extinction $\Delta\tau_{Aer}$, and O3 $\Delta\tau_{O3}$) between oxygen in-band and reference band, as shown in Equation (12).

$$\Delta\tau_{BG} = \Delta\tau_{Ray} + \Delta\tau_{Aer} + \Delta\tau_{O3} \quad (12)$$

As stated in the previous subsection, in the standard atmospheric model with background aerosol loading, ($\Delta\tau_{Ray}$, $\Delta\tau_{Aer}$, $\Delta\tau_{O3}$) is approximately (0.002, 0.0005, -0.0005) and (-0.002, -0.0005, -0.002) respectively at oxygen A and B bands, thus $\Delta\tau_{BG}$ is approximately 0.002 and -0.0045 respectively at these two bands.

In this total analytic equation, there are 16 coefficients ($a_0, a_1, b_1, a_2, \dots, d_4, e_4, f_4$), which can be calculated through nonlinear regression algorithm according to a series of simulated values for different atmospheric conditions. Based on Equation-Eq. (11), we can finally obtain a

quadratic equation, $A\sqrt{\tau_{O2}^{Top}} + B\sqrt{\tau_{O2}^{Top}} + C = 0$, where the parameters A, B and C (not shown here) can be derived from Equation-Eq. (11) directly, as shown in Equation (13).

$$A = a_0 \left(\frac{1}{\mu} + \frac{1}{\mu_0}\right) + b_1(a_2 T + b_2(\mu + \mu_0) + c_2 T(\mu + \mu_0) + d_2 \mu \mu_0) \quad (13.1)$$

$$B = a_1(a_2 T + b_2(\mu + \mu_0) + c_2 T(\mu + \mu_0) + d_2 \mu \mu_0) \quad (13.2)$$

$$C = -\log\left(\frac{R_A}{R_f}\right) - \Delta\tau_{BG} \left(\frac{1}{\mu} + \frac{1}{\mu_0}\right) - \Delta\tau_{O2}^{In-Cloud}(a_3 T + b_3(\mu + \mu_0) + c_3 T(\mu + \mu_0) + d_3 \mu \mu_0) - T \tau_{O2}^{Surface} \frac{A_{Surf}}{1 + (e_4 T + f_4) A_{Surf}} (a_4 T + b_4(\mu + \mu_0) + c_4 T(\mu + \mu_0) + d_4 \mu \mu_0) \quad (13.3)$$

When these parameters (i.e., A, B and C) are obtained from EPIC observation data and other data source, we can easily solve the quadratic equation to retrieve cloud top O2 absorption depth, and then CTP.

2.3 Detailed retrieval algorithm

As previously stated, in method 2, the analytic EPIC equation (i.e., Equation-Eq. (11)) is key for the CTP retrieval. To derive the coefficients of Equation-Eq. (11), a series of model simulations for various atmospheric conditions are needed. Thus, developing a radiative transfer model to simulate the EPIC measurements at A- and B-bands and their reference bands is the first thing we need to complete.

42.3.1 Oxygen A- and B-band absorption coefficients calculation

To simulate the EPIC measurements, one of the most important steps is calculating oxygen absorption coefficients at oxygen A-band and B-band. In this step, the latest HITRAN

2016 database ([Gordon et al., 2017](#)) is used to provide the absorption parameters, and the LBLRTM package ([Clough et al., 2005](#)) is used to calculate oxygen absorption coefficients layer by layer. In our algorithm, the whole Earth atmosphere is divided by 63 layers.

Since oxygen absorption coefficients are pressure (or pressure-squared) and temperature dependent, and the line [shapes \(\$k_i\$ \) of oxygen A- and B-bands](#) are well fitted as Lorentzian in the lower atmosphere, the relationship can be written as follows:

$$k_i = \frac{S_i}{\pi} \frac{\alpha_i}{(v-v_i)^2 + \alpha_i^2} \quad (4214)$$

$$\alpha_i = \alpha_i^0 \frac{P}{P_0} \left(\frac{T_0}{T} \right)^{\frac{1}{2}}, \quad S_i = S(T_0) \frac{T_0}{T} \exp \left[1.439E \left(\frac{1}{T_0} - \frac{1}{T} \right) \right] \quad (4315)$$

Where S_i is the line intensity, v_i and α_i are the line center wave number and half width, respectively; P and T_0 are standard atmospheric pressure and temperature, respectively.

~~An unfortunate result of this is that cloud levels at a given pressure-weighted oxygen absorption depth. In the simulation of EPIC measurements, the atmospheric layer at a given layer-average pressure can have drastically different temperature heights depending on the atmospheric profile in use. We have used To ensure the accuracy of simulation, we need to use the LBLRTM package to calculate oxygen absorption coefficients parameters for each pressure/temperature profile, which is a time-consuming process. Our goal has been to find a simple and fast method to calculate oxygen absorption coefficient conversion function from pressure to altitude for different atmospheric profiles. Based on the study of Chou and Kouvaris (1986), Min et al. (2014) proposed a fast method to calculate oxygen absorption optical depth for any given atmosphere by Using using a polynomial fitting function, as shown in Equation. 16. ; fitting coefficients can be determined for oxygen absorption and applied to any given atmosphere (Min et al., 2014; Chou and Kouvaris, 1986).~~

$$\ln(A_{vLM}) = [a_0(v, P) + a_1(v, P) \times (T_{LM} - T_{mL}) + a_2(v, P) \times (T_{LM} - T_{mL})^2] \times \rho_{O_2} \quad (4416)$$

Where A_{vLM} is optical depths for layer L, spectral point v, and atmosphere model M; ρ_{O_2} is molecular column density ($\frac{\text{molecules}}{\text{cm}^2} \times 10^{-23}$); T_{LM} is the average temperature for layer L for a given atmosphere; and T_{mL} is average temperature over all [six typical geographic-seasonal model](#) atmospheres (M1 to M6, i.e., [tropical model, mid-latitude summer model, mid-latitude winter model, subarctic summer model, subarctic winter model, and the U.S. Standard \(1976\) model](#)) for layer L. [To derive the coefficients \$a_0\$, \$a_1\$, and \$a_2\$, we first calculated oxygen optical depth coefficients for all typical atmospheres \(M1 to M6\) by using LBLRTM package, and then selected three of them \(e.g., M1, M5, and M6\) to calculate the polynomial fitting coefficients. This method has been successfully used by Min et al. \(2014\) to simulate the high resolution oxygen A-band measurements.](#)

42.3.2 Fast radiative transfer model for simulating high-resolution oxygen A- and B-bands

[At oxygen A and B absorption bands, there are lots of absorption lines, therefore w](#)We cannot simply calculate narrowband mean optical depth and then calculate the radiation for various atmospheric conditions when simulating EPIC narrowband measurements. The correct way is described as follows: firstly, simulate the solar radiation spectrum $S(k(\lambda))$ under specific

atmospheric conditions, then integrate the spectrum with EPIC narrowband filter $R(k(\lambda))$ to obtain simulated narrowband measurements (~~Equation-Eq. 15~~(17)).

$$R(\lambda) = \int S(k(\lambda))R(k(\lambda))d\lambda \neq R(\overline{k(\lambda)}) \quad (4517)$$

With the high spectrum resolution oxygen absorption coefficient data, we can simulate the high resolution upward diffuse oxygen A-band or B-band spectrum through DISORT code (Stamnes et al., 1988) for any given atmospheric condition, which has various surface albedo, SZA, ~~cloud-optical-depth~~COD, ~~cloud-top-height~~CTH (~~pressure~~CTP), and cloud geometric (pressure) thickness. However, due to the high spectrum resolution, it is very time-consuming when performing line by line (LBL) calculations. Thus, developing a fast radiative transfer model for simulating high resolution oxygen A-band and B-band spectrum is necessary.

In this project, the double- k approach is used to develop a fast radiative transfer model for oxygen A-band and B-band respectively. [Min and Harrison 2004; Duan et al, 2005] proposed a fast radiative transfer model. In their approach, the radiation from absorption and scattering processes of cloud and aerosol are split into the single- and multiple-scattering components: The single scattering component is computed line-by-line (LBL), while multiple scattering (second order and higher) radiance is approximated.

$$\begin{aligned} I &= I^{ss}(\lambda) + I^{ms}(\lambda) \\ &\approx I^{ss}[Z^h(p, \textcolor{red}{T}), P^h, \lambda] + I^{ms}[Z^h(p, \textcolor{red}{T}), P^h, \lambda] \\ &\approx I^{ss}[Z^h(p, \textcolor{red}{T}), P^h, \lambda] + I^{ms}[Z^l(p, \textcolor{red}{T}), P^l, \lambda] \\ &\approx I^{ss}[Z^h(p, \textcolor{red}{T}), P^h, \lambda] + I^{ms}\{F[Z^l(p, \textcolor{red}{T}), P^l, k(\lambda_i)]\} \end{aligned} \quad (4618)$$

~~Equation-Eq. 16~~(18) is from ~~Equation-Eq. (1)~~ in Duan et al. (2005): ss and ms mean single and multiple scattering, respectively. Z is the optical properties of the atmosphere as a function of pressure p and temperature $\textcolor{red}{T}$, with P being the phase function of that layer. ~~H~~ h and l represent higher and lower number of layers and streams, respectively. F is the transform function between wave number space and k space, defined from a finite set of $k(\lambda_i)$.

The application of Double- k approach in oxygen A-band has been presented in detail in Duan et al. 2005. Here we take oxygen B-band as an example. The detailed fast radiative transfer model for simulating high-resolution oxygen B-band is as follows: The first order scattering radiance is calculated accurately by using a higher number of layers and streams for all required wavenumber grid points. The multiple-scattering component is extrapolated and/or interpolated from a finite set of calculations in the space of two integrated gaseous absorption optical depths to the wavenumber grids: a double- k approach. The double- k approach substantially reduces the error due to the uncorrelated nature of overlapping absorption lines. More importantly, these finite multiple-scattering radiances at specific k values are computed with a reduced number of layers and/or streams in the forward radiative transfer model. To simulate an oxygen B-band spectrum with high accuracy, 33 k values and 99 calculations of radiative transfer are chosen in our program. This results in around a hundred-fold time reduction with respect to the standard forward radiative transfer calculation.

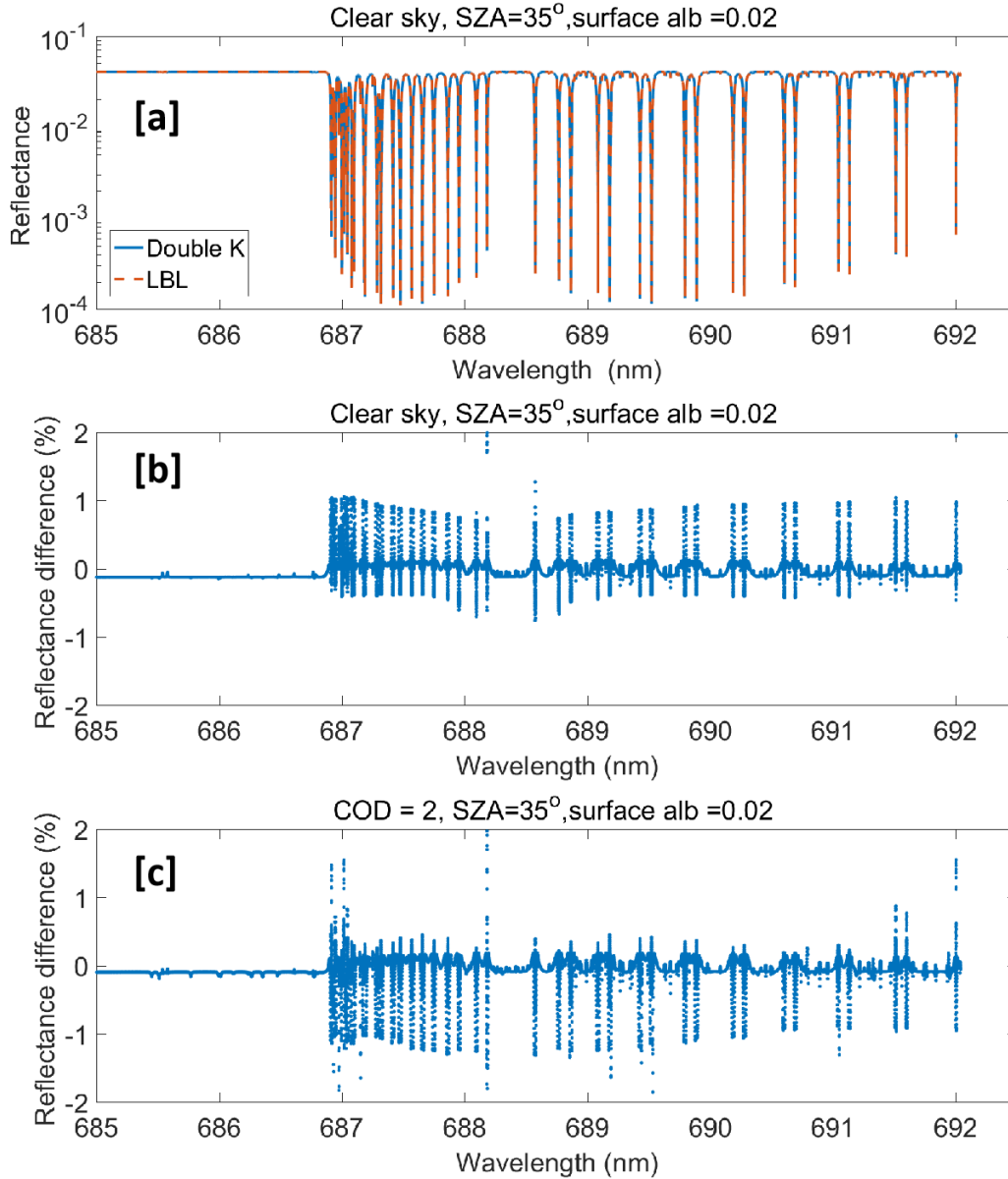


Figure 2. [a] High resolution reflectance at EPIC O2 B-Band simulated by fast radiative model (double-k) and benchmark (LBL); Difference between simulated reflectance by double-k and LBL for a clear sky case [b] and a [thin liquid water](#) cloud case with COD=2 [c]. Here SZ=35° and view angle =35°, surface albedo = 0.02, [aerosol optical depth = 0.08](#), and [reflectance difference \(%\) = 100*\(\(double-k\) - LBL\)/LBL](#).

As shown in Figure 2, under clear sky and thin [liquid water](#) cloud situations, the simulated high resolution upward diffuse oxygen B-band spectra from LBL calculation and double-k approach are compared. The spectrum difference between LBL calculation and double-k approach is very small ~~and hard to tell directly~~ (Figure 2a). Under both situations, most of the relative difference between these two methods are under 0.5%. The obvious relative difference (>1%) occurs only in the wavelength range with high absorption optical depth, which has little contribution to the integrated solar radiation. Therefore, for the simulated narrowband

measurements at EPIC oxygen B-band, the relative difference between LBL and double-k approach is much smaller than that of the high resolution spectrum, which is less than 0.1% for both clear day. Compared to clear sky situation, the relative difference for and cloud situations can be bigger. As (shown in Table 1, the relative difference is -0.06% and -0.32% for typical high level optical thin cloud and low-level thick cloud situations, respectively). For optically thick cloud situations, the accuracy of the double-k approach is similar to that of thin cloud situations. The comparison of simulated narrowband measurement at EPIC oxygen A-band channel (764 nm) is also shown in Table 1, the relative differences between LBL and double-k approach are -0.06%, 0.21% and 0.23% for clear day, high level thin cloud and low level thick cloud cases, respectively. In general, the accuracy of double-k approach for both oxygen A and B absorption bands is high.

Table 1. Comparison of simulated narrowband measurement at EPIC A- and B-Band channels

Case	Line by line	Double-k	Difference	
Clear day	0.026963	0.026985	+0.08%	
Thin-Cloud	0.084046	0.084033	-0.02%	
Case (SZA=35, surface albedo =0.02)		Line by Line	Double k	Relative Difference
Clear Day	688 nm	0.026963	0.026985	+0.08%
	764 nm	0.013979	0.013970	-0.06%
Thin cloud (COD=2, 8.3-8.5 km, liquid)	688 nm	0.098444	0.098131	-0.32%
	764 nm	0.071359	0.071507	+0.21%
Thick cloud (COD=16, 1.5-2.9 km, liquid)	688 nm	0.396354	0.396117	-0.06%
	764 nm	0.233937	0.234485	+0.23%

42.3.3 Simulation of oxygen A- and B-bands for different atmospheric conditions

Using the EPIC measurement simulation package, we made a series of simulations with different settings for surface albedo, solar zenith angle, cloud optical depth COD, CTH cloud top height (pressure CTP), and cloud geometric (pressure) thickness (or cloud bottom height). The results of these simulations consist of a data table, which can be used not only to calculate the coefficients for the analytic equation, but also to study the sensibility sensitivity of every variant variable.

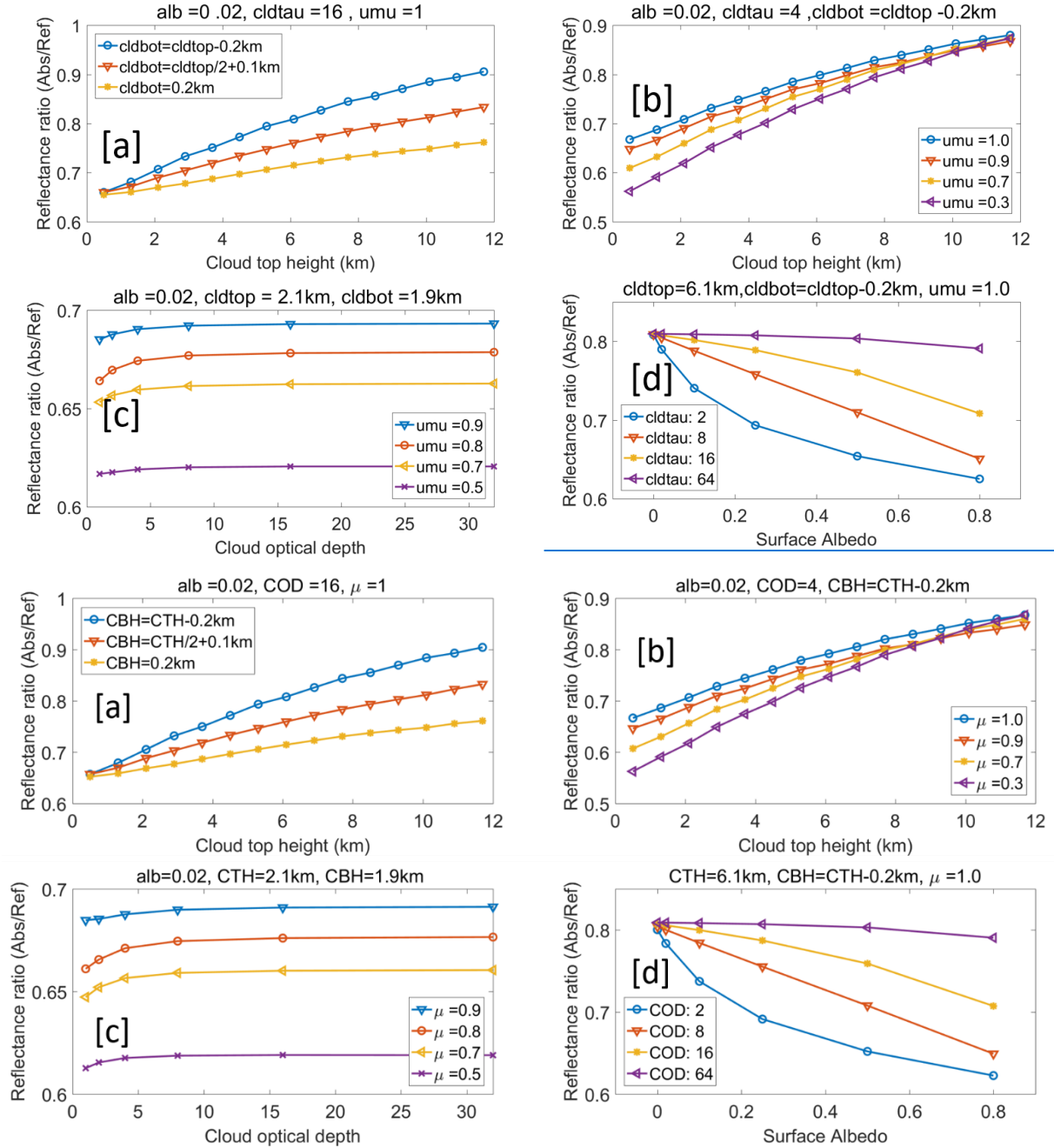


Figure 3. Ratio of simulated reflectance measurements for EPIC B-band to B-band reference with different surface albedo (alb), cloud optical depth (COD), μ (cosine of solar zenith angle), cloud top height (CTH) and cloud bottom height (CBH).

According to the previous theory study, the ratio of reflectance radiance (i.e., absorption to the reference) at TOA is determined by the photon path length distribution at oxygen A/B bands: the larger the mean photon path length, the stronger the absorption, and the smaller the reflectance ratio. To make the figures easy to view and understand, we use cloud top and bottom geometric height to represent $CTP_{cloud\ top\ pressure}$ and thickness information in Figure 3. As shown in Figure 3a, the ratio of upward diffuse radiance at oxygen B-band and its reference band

is sensitive to the cloud top height (pressure). The higher the ~~cloud top height~~CTH, the larger the ratio. At the same time, this ratio is affected by the cloud bottom height (or cloud geometric thickness) when the other cloud parameters are fixed, the lower the cloud bottom (or the larger the cloud geometric thickness), the smaller the ratio. It is consistent with the theory analysis: (1) the higher the ~~cloud top height~~CTH, the shorter the mean photon path length, and the weaker the absorption; (2) when the ~~cloud optical depth~~COD is given, larger cloud geometric thickness means smaller cloud density, then the sunlight can penetrate deeper into the cloud, which results in a longer mean photon path length. In Figure 3b, for clouds with given ~~cloud top height~~CTH, ~~cloud optical depth~~COD and geometric thickness, the ratio decreases with the solar and view angles. This ~~is easy to understand~~can be understood as: the larger the solar and view angles, the longer the mean photon pathlength, and the stronger the absorption. In Figure 3c, for clouds with given ~~cloud top height~~CTH and geometric thickness, when the ~~cloud optical depth~~COD is small (e.g., COD < 5), the reflectance ratio increases with ~~cloud optical depth~~COD. However, when ~~cloud optical depth~~COD is larger than 16, the effect of ~~cloud optical depth~~COD is small. This is because the larger the ~~cloud optical depth~~COD, the shallower the sunlight penetration, and the shorter the mean photon pathlength. In Figure 3d, for clouds with given ~~cloud optical depth~~COD, CTP, and geometric thickness, the ratio decreases with surface albedo. The smaller the ~~cloud optical depth~~COD, the stronger the impact of the surface albedo. This is because the ~~heavy-thick~~ cloud prevents the incident sunlight from passing through it to reach the surface, and also prevents the reflected light from going back to the TOA.

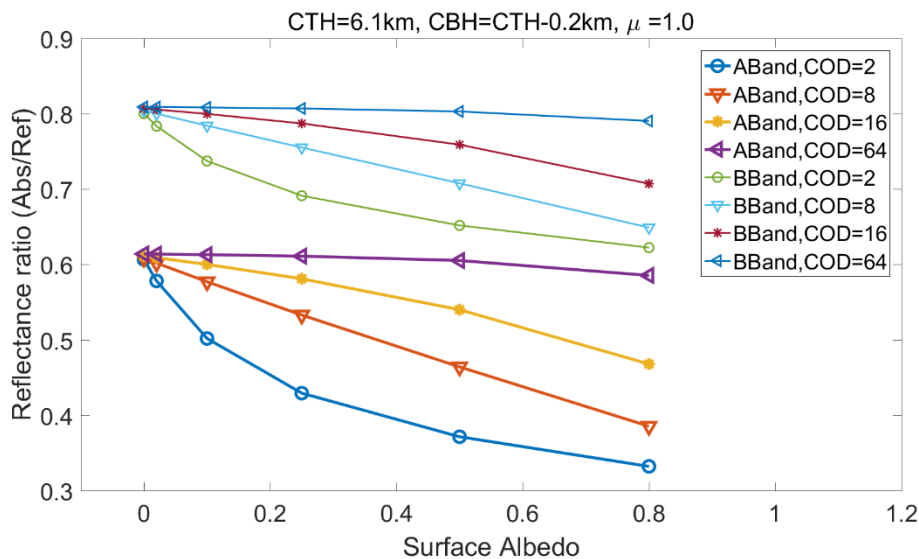


Figure 4. Ratio of simulated reflectance measurements for EPIC A and B absorption band to reference band with different surface albedo.

For oxygen A-band, the ratio of upward diffuse at absorption and reference bands shows similar characteristics as ~~for~~ oxygen B-band. Compared to oxygen B-band, under the same atmospheric conditions, the oxygen absorption at A-band is stronger, and the ratio of A-band to its reference band has smaller values (shown in Figure 4). As stated previously, for land area that covered with plants, the surface albedo may change substantially from oxygen B-band to A-band due to the presence of the red edge. Therefore, accurate spectral data of surface albedo for CTP retrieval is vitally important, especially for optically thin clouds.

3. Application and validation of the CTP retrieval method

3.1 Case studies of ~~cloud top pressure~~CTP retrieval

The dataset of DSCOVR EPIC measurements at GMT 00:17:51 on July 25, 2016 is used for the case studies. The reflectance at oxygen A and B bands with related solar zenith and viewing angles are obtained from the EPIC level 1B data; COD information (retrieved from other EPIC channels) is obtained from EPIC level 2 data. The surface albedo data is obtained from Global Ozone Monitoring Experiment 2 (GOME-2) Surface Lambertian-equivalent reflectivity (LER) data. The detailed information of dataset is shown in the acknowledgements and dataset. To reduce the impact of the Earth surface, we selected the region located in spatial range of (S75° to N85°, W177° to W175°) for case studies, which is mainly covered by ocean. To constrain the influence of surface albedo and broken clouds, only pixels with total cloud covering (i.e., EPIC Cloud mask = 4), surface albedo less than 0.05, and liquid assumed COD larger than 3 are considered. In the selected region, around 10000 pixels are finally chosen for case studies.

In our retrieval algorithm, we have two kinds of retrieval results: baseline CTP and retrieved CTP. The baseline CTP is used as a reference for the retrieved CTP. It is similar to the effective CTP in Yang et al., (20132019), which does not consider cloud penetration. The retrieved CTP is calculated by the analytic equation, which considers the in-cloud and below-cloud interaction.

During the baseline CTP calculation, the impact of penetration in-cloud is ~~ignorable~~ignored, and the incident light that reached cloud top is assumed reflected back directly. As shown in Equation-Eq. 45(19), the baseline absorption optical depth τ_{base} is derived from the ratio of upward diffuse at absorption bands and their reference bands directly. According to the model calculated oxygen A and B bands absorption optical depth profile at the specific solar zenith angle, the baseline CTP can be derived directly.

$$\tau_{base} = \log \left(-\frac{R_{abs}}{R_{ref}} \right) / \left(\frac{1}{\cos(\theta_{sza})} + \frac{1}{\cos(\theta_{view})} \right) \quad (4519)$$

As shown in Figure 45, the baseline CTP value at A-band is slightly higher than the effective CTP from NASA ASDC L2 data. But the baseline CTP value at B-band is substantially higher than the effective CTP from NASA ASDC L2 data. For both A-band and B-band, the difference between baseline CTP and effective CTP increases with the CTP. For low-level clouds, the mean differences of them are up to 60 mb and 100 mb at A-band and B-band, respectively. The difference may be mainly from the calculation of oxygen A and B bands absorption coefficients or the absorption optical depth profile.

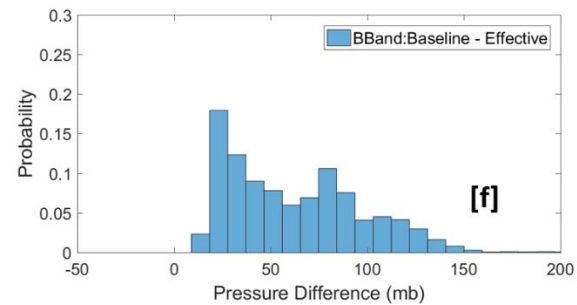
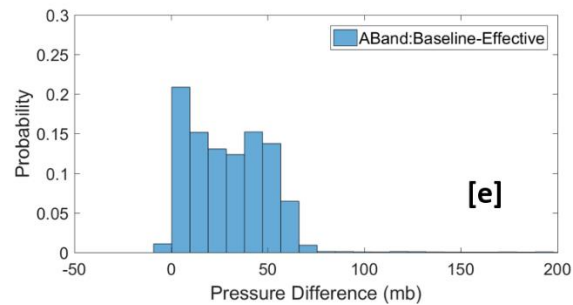
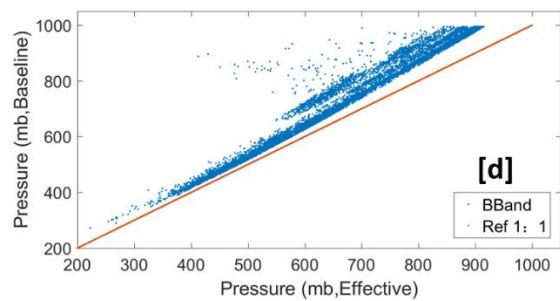
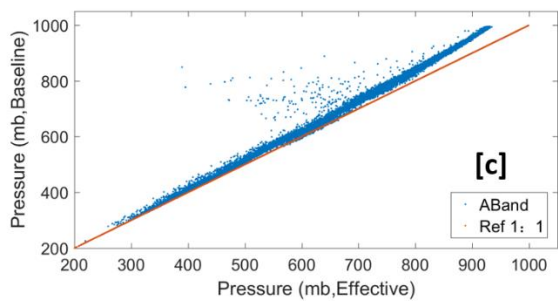
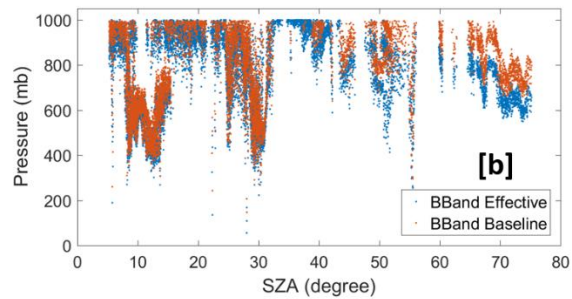
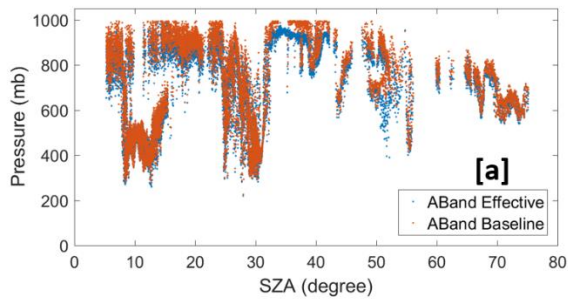
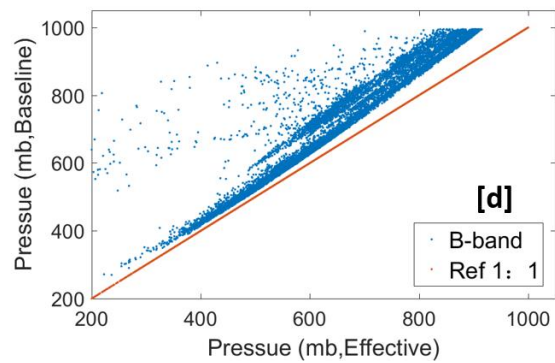
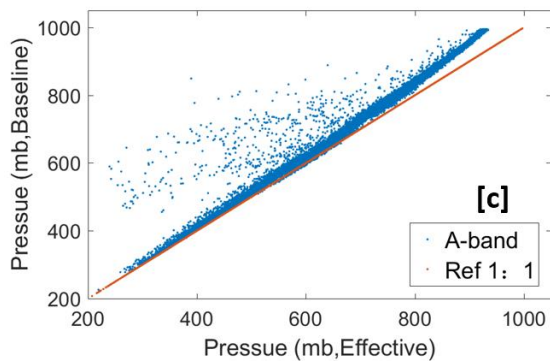
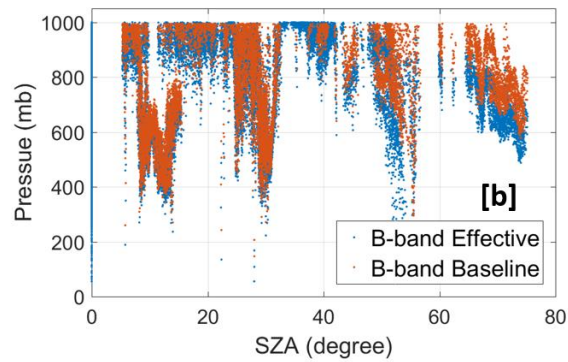
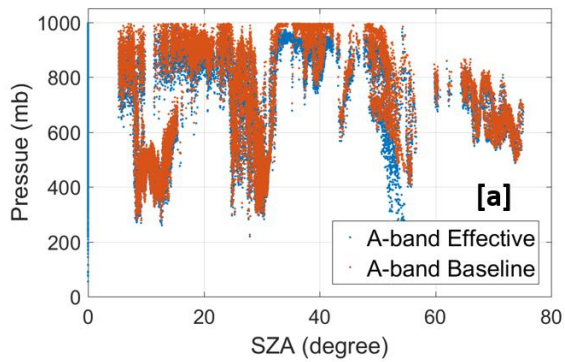
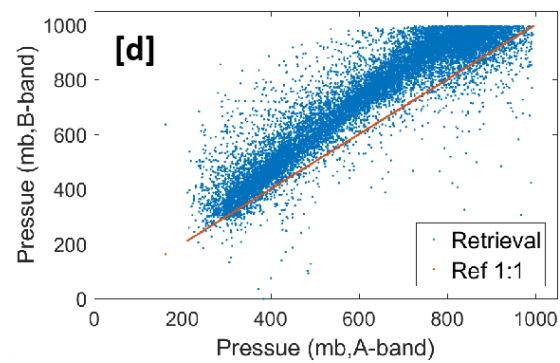
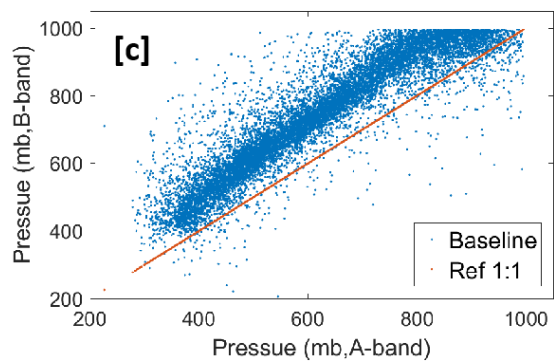
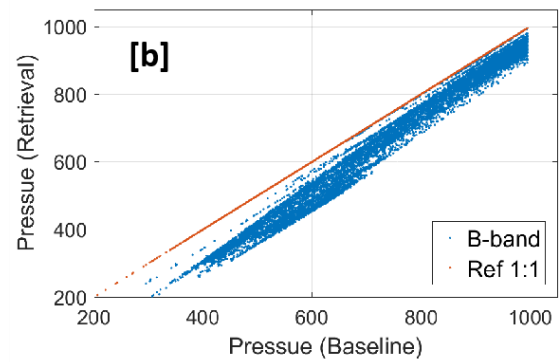
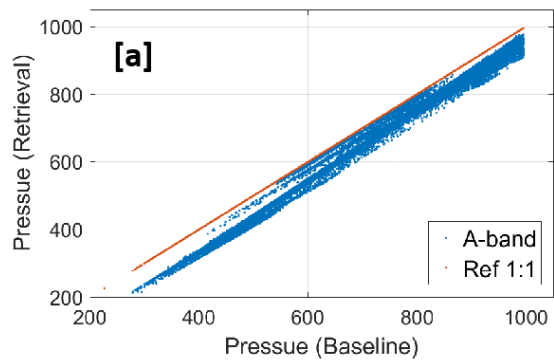


Figure 45. The comparison of effective CTP (reference from NASA ASDC data) and baseline values from our retrieval algorithm for EPIC A and B bands.

Based on the simulated reflectance ratio under different atmospheric conditions, we can calculate the coefficients for the analytic radiative transfer equations by using a nonlinear fitting algorithm. The coefficients for different SZA's are calculated individually to reduce the fitting error. Based on the calculated coefficients, we can retrieve the CTP with DISCOVER EPIC observation data at oxygen A and B bands.

During the CTP retrieval, with the exception of the previously mentioned analytic equation coefficients, we can get the surface albedo data from GOME, obtain reflectance data, solar zenith and view angles, [cloud-optical-depthCOD](#), etc. from the NASA ASDC data file. Another very important step in the retrieval processing is the acquisition of cloud pressure thickness data, which has a substantial impact on the retrieval results. We currently use a statistical approach (i.e., cloud pressure thickness (mb) = $2.5 * \text{cloud-optical-depthCOD} + 2623$) to estimate the cloud pressure thickness based on [cloud-optical-depthCOD](#). As shown in Figure [5a-6a-6d](#) and [5b](#), the retrieved CTP when considering cloud penetration is smaller than baseline CTP. For this case, the mean difference between baseline CTP and retrieved CTP for oxygen A-band and B-bands are around 57 mb and 85 mb, respectively, which is consistent with theoretical expectations. For clouds with a given CTP, the mean photon path length will increase substantially when considering cloud penetration [and interaction](#). A decrease in retrieved CTP will result in order to match the measurement ratio of absorption to reference. Compared to the O2 A-band, both baseline CTP and retrieved CTP for the O2 B-band are larger (Figure [5e-6e-6h](#) and [5d](#)). This is because the absorption of solar radiation in the O2 B-band is weaker than that of the O2 A-band, and the incident light at oxygen B-band can penetrate deeper into the cloud, allowing more light to pass through. The difference in retrieved CTP between B band and A band (approx. [101-93 mb with standard deviation of 83 mb](#)) is generally reduced in comparison to baseline B band and A band (approx. [129-114 mb with standard deviation of 73 mb](#)). This indicates, as expected, more photon penetration correction for B-band than A-band.



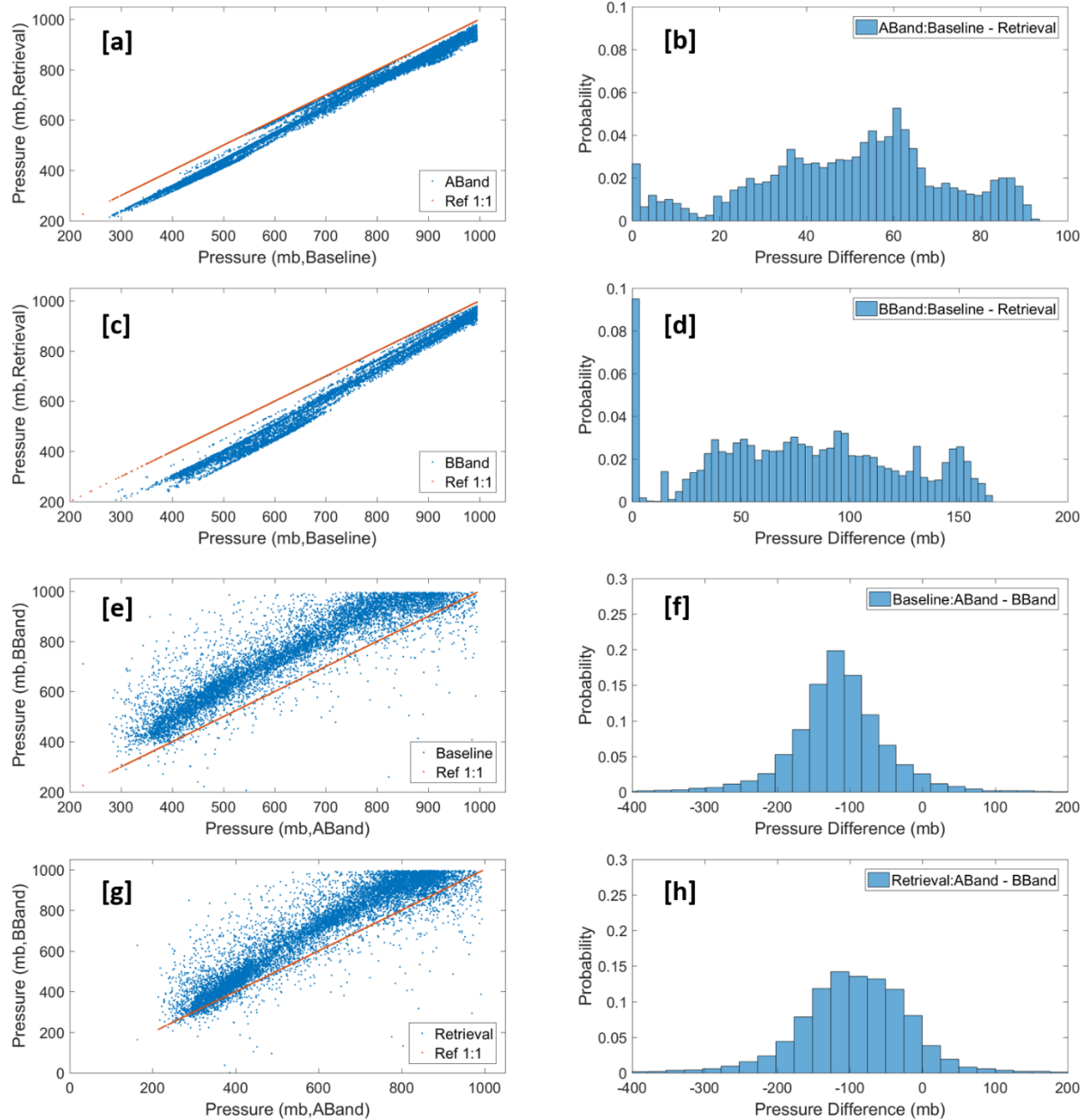


Figure 56. (a and b) The comparison of retrieved CTP and baseline values for EPIC A and B bands; (c and d) the comparison of retrieved CTP and baseline values between EPIC A- and B- bands.

We also used the LUT based method to do the retrieval for the same observation data, because both methods share the same EPIC simulation package and the same simulated data table, the results of which are similar.

3.2 Validation of the retrieval method

To validate the analytic transfer inverse model method for CTP retrieval, we used another independent measurement of CTP, i.e., cloud layer top pressure from Cloud-Aerosol Lidar and

Infrared Pathfinder Satellite Observations (CALIPSO, Vaughan et al., 2014) as a reference. For the previously stated case, i.e., DSCOVR EPIC measurements at GMT 00:17:51 on July 25, 2016, we used the cloud layer data from CALIPSO IIR Version 4.2 Level 2 product with 5 km resolution at GMT 00:01:47 on July 25, 2016 as its reference to do validation. To constrain the error from spatial differences between different satellite measurements, we only chose the pixels of EPIC and CALIPSO measurements with a spatial distance of within 0.1° (degree of latitude or longitude) to make comparisons. For the EPIC measurements, the same as previously stated, only pixels with total cloud cover (i.e., EPIC Cloud mask = 4), surface albedo less than 0.05, and liquid assumed COD larger than 3 are considered. As shown in Figure 7a, there are a series of pixels (around 400 cases) from EPIC and CALIPSO measurements can be used for the validation analysis. For the convenience of reading, we perform the analyses by using the case number as x axis. Figure 7b shows the comparisons of cloud layer top pressure from CALIPSO and different CTPs (i.e., effective CTP, baseline CTP, and retrieved CTP) from EPIC measurements. Figure 7c shows the cloud layer number measured by CALIPSO. According to Figures 7b and 7c, we can get some results: under single layer cloud situations, the CTPs derived from EPIC measurements are close to the CTP from CALIPSO; under multi-layer cloud situations, the CTP derived from EPIC measurements are larger than the CTP from CALIPSO. Figure 7d shows the expanded view of the Figure 7b for some cases under single layer cloud situations. For these single layer cloud cases (with case number 46 ~ 156), the mean values of CTP of CALIPSO, EPIC effective, EPIC baseline and EPIC retrieval are 846, 834, 866 and 850 mb, respectively. Compared to the CTP from CALIPSO measurements, the EPIC effective and baseline CTPs are 12 mb smaller or 20 mb larger, respectively; the EPIC retrieval with consideration of photon penetration is only 4 mb larger. This shows that our method for the CTP retrieval is valid and accurate under single layer cloud situations with $COD > 3$ and low surface albedo. Under multi-level cloud situations, the high-level clouds are often thin clouds, which can be detected by CALIPSO but hard to derive by our retrieval method. It is because the EPIC retrieved CTP mainly shows the pressure of cloud layer that reflects the major part of incident sun light.

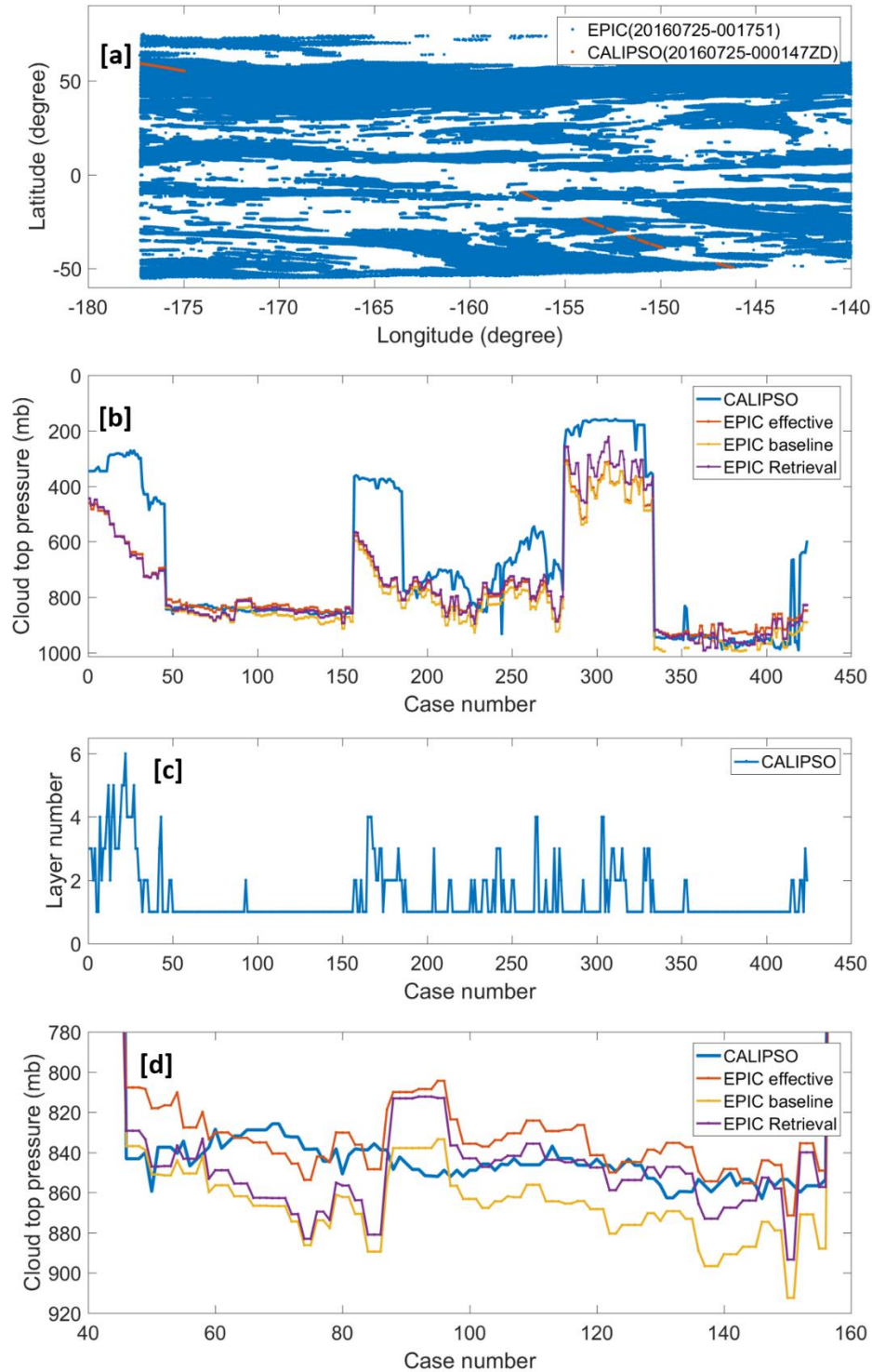
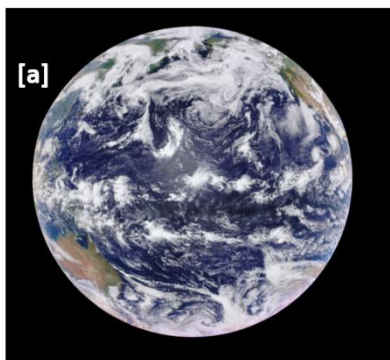


Figure 7. (a) The geolocation match of EPIC measurement at GMT 00:17:51 and CALIPSO measurement at GMT 00:01:47 on July 25, 2016; (b) the comparisons of cloud layer top pressure from CALIPSO measurements and the CTPs derived from EPIC measurements; (c) the cloud layer number from CALIPSO measurements; and (d) the expanded view of (b) for some cases under single layer cloud situations.

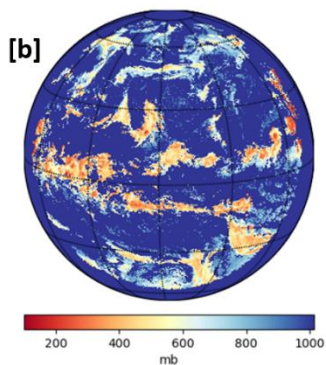
3.3 Retrieval of global observation

We applied our retrieval algorithm on the global DISCOVER EPIC measurement data at oxygen A and B bands. During the retrieval, only pixels with total cloud covering (i.e., cloud mask index of 4), surface albedo < 0.25 , and cloud optical depth $COD \geq 3$ are considered. To make the pictures easy to visualize and analyze, we set all invalid values are plot as white (or blank) pixels to 1013; same as the background sea level pressure.

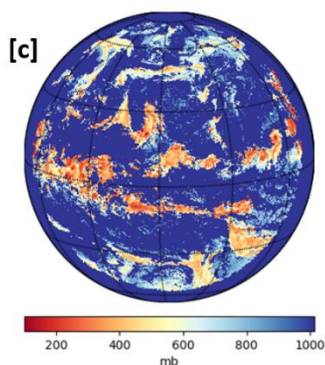
Figure 6a-8a shows the synthesized RGB picture of EPIC measurements at GMT time 00:17:51 on July 25, 2016. At this point in time the sun light covers most of the Pacific Ocean. In this figure, the white pixels represent cloud cover. Figure 6d-8b shows the global cloud optical depth COD (NASA ASDC L2 data), in which the white areas and colorful areas indicate the clear sky areas and cloudy areas, respectively. On the whole, the highlights cloudy areas are consistent with the RGB image. The highlight (red) areas indicate that the cloud systems there contain optically heavy clouds. Figure 8c shows the A-band effective CTP (NASA ASDC L2 data), where the white areas indicate clear sky or no valid values, warm (brown) and cold (blue) color areas indicate high-level and low-level clouds, respectively. According to the A-band effective CTP, the high-level clouds are dominant in the equatorial area, and the low-level clouds play a major role in the cloud systems in the Northern Pacific area. Figure 6b-8d and 6e-8e show the baseline and retrieved CTP at A-band, respectively, which also highlights cloudy areas (white to brown) are consistent with the RGB image the A-band effective CTP image on the whole. Due to the filtering setting in the CTP retrieval algorithm, there are more white pixels (invalid values) in these two figures. The difference of A-band retrieved CTP and A-band effective CTP is shown in Figure 8d. The A-band retrieved CTP is overall smaller than A-band effective CTP, which difference is within 100 mb. The highlighted (brown or red) areas are located in the high level clouds areas or large COD areas. This indicates that the complexity of cloud system has significant impact on the CTP retrieval. Figure 6e-8g and 6f-8h show the baseline and retrieved CTP in B-band respectively, which are similar to, but greater than the A-band. As shown in Figure 8i, the retrieved CTP at EPIC B-band is overall significantly larger than the retrieved CTP at EPIC A-band, which mean difference is up to 200 mb. Because we use the cloud optical depth to estimate the cloud pressure thickness in our retrieval, part of the retrieval error is from the cloud optical depth and the equation for cloud pressure thickness estimation.



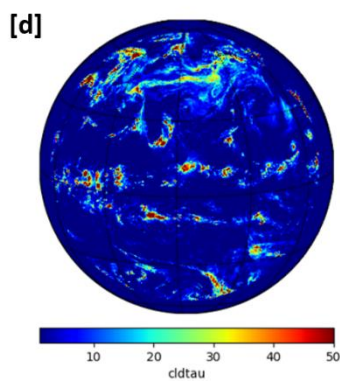
A-band Cloud TOP Pressure (baseline)



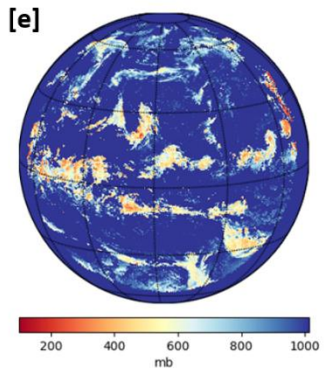
A-band Retrieved Cloud TOP Pressure



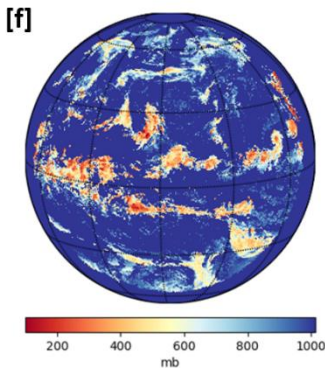
EPIC cloud tau



B-band Cloud TOP Pressure (baseline)



B-band Retrieved Cloud TOP Pressure



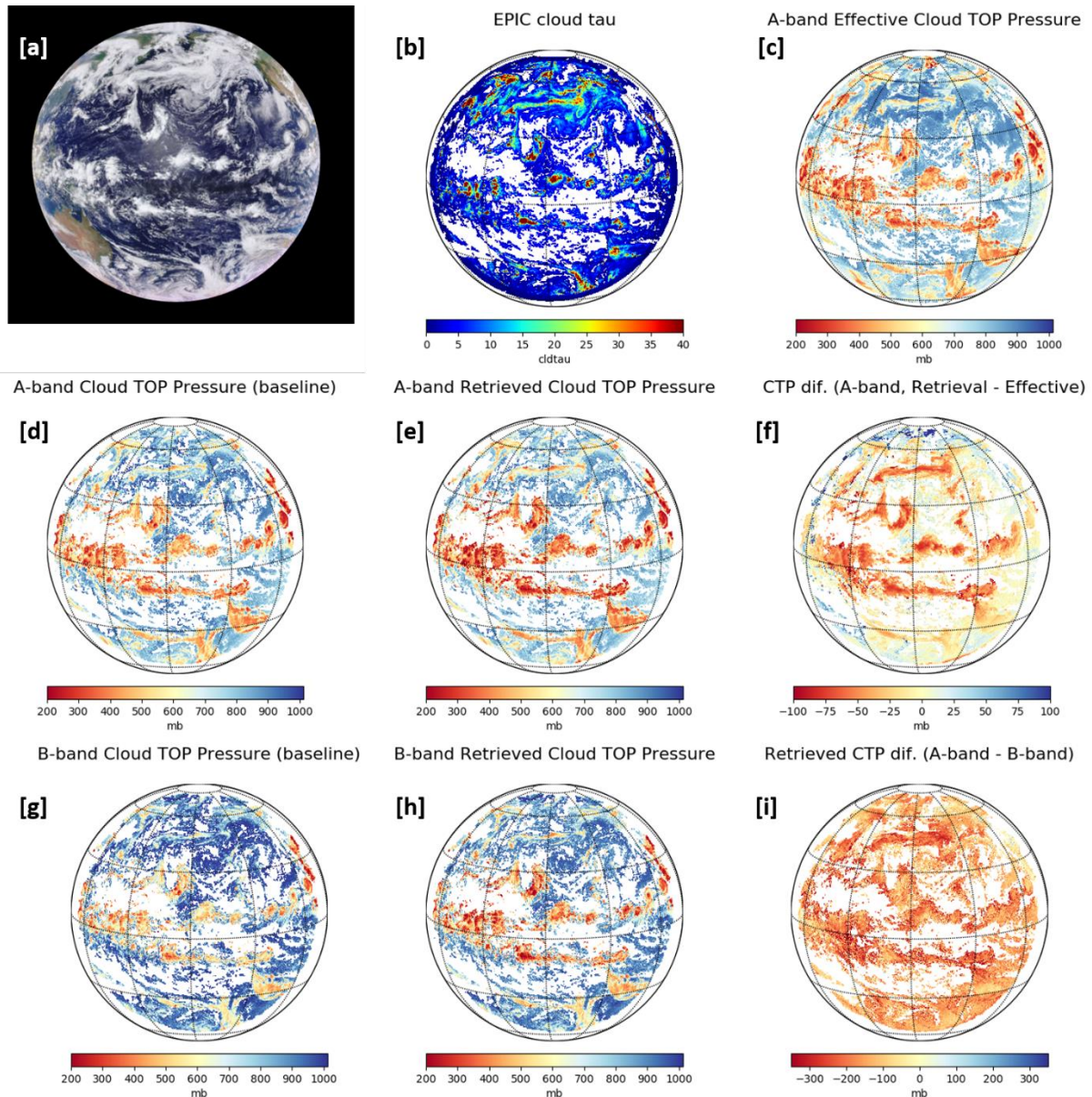


Figure 68. (a) RGB image from DSCOVER EPIC measurement at GMT time 00:17:51 on July 25, 2016; (b) and (c) COD (liquid assumption) and A-band effective CTP from NASA ASDC EPIC L2 products; (d) and (e) Baseline and retrieved CTP derived from EPIC A-band measurement; ~~(d) Cloud optical depth (liquid assumption) from EPIC L2 products~~; (f) the difference of A-band retrieved CTP and A-band effective CTP; (g) and (h) Baseline and retrieved CTP derived from EPIC B-band measurement; and (i) the difference of retrieved CTP between EPIC A-band and B-band.

As previously stated in the subsection 3.2: under single-layer cloud situations, the CTPs derived from EPIC A-band measurements have good agreement with the CTP from CALIPSO measurements; under multiple-layer cloud situations, the CTPs derived from EPIC measurements may be larger than the CTPs of high level thin-clouds due to the effect of photon penetration. Therefore, in the global range, for the large scale low-level stratus clouds, the retrieved CTPs from EPIC A-band measurements should agree well with the actual value of

CTPs, but for the complex cloud system with multiple-layer clouds, the CTPs derived from EPIC A-band measurements may be larger than that of high level thin-clouds.

2.4. Conclusion

The in-cloud photon penetration has significant impacts on the CTP retrieval when using DSCOVR EPIC oxygen A- and B- band measurements. To address this issue, we proposed two methods, (1) the LUT based method and (2) the analytic transfer inverse model method for CTP retrieval with consideration of in-cloud photon penetration. In the analytic transfer inverse model method, we build an analytic equation that represents the reflection at TOA from above cloud, in-cloud, and below-cloud, respectively. The coefficients of this analytic equation can be derived from a series of EPIC simulations under different atmospheric conditions using a non-linear regression algorithm. With EPIC observation data, the related solar zenith and sensor view angle, surface albedo data, cloud optical depth COD, and estimated cloud pressure thickness, we can retrieve the CTP by solving the analytic equation.

We developed a package for the DSCOVR EPIC measurement simulation. The high resolution radiation spectrum must be simulated first and then integrated with the EPIC filter function in order to accurately simulate EPIC measurements. Because this process is highly time-consuming, a polynomial fitting function is used when calculating the oxygen absorption coefficients under different atmospheric conditions. At the same time, the double-k approach is applied to do the high-resolution spectrum simulation to further reduce time-costs, which can obtain high accuracy results with hundred-fold time reduction. The results of the EPIC simulation measurements are consistent with theoretical analysis.

Based on the EPIC simulation measurements, we derived a series of coefficients from various solar zenith angles for the analytic EPIC equations. Using these coefficients, we performed CTP retrieval for real EPIC observation data. We have two kinds of retrieval results: baseline CTP and retrieved CTP. The baseline CTP is similar to the effective CTP in ~~Yuekui~~ Yang et al., (20122019), which does not consider cloud penetration. The retrieved CTP is derived by solving the analytic equation, with consideration of the in-cloud and below-cloud interactions. Compared to the effective CTP provided by NASA ASDC L2 data, the baseline CTP value at A-band is slightly higher, but the baseline CTP value at B-band is substantially higher. The retrieved CTP for both oxygen A- and B- bands is smaller than the related baseline CTP. At the same time, compared to the oxygen A-band, both baseline CTP and retrieved CTP at oxygen B-band is ~~obviously~~ larger. The cloud layer top pressure from CALIPSO measurements is used to validate the CTP derived from EPIC measurement. Under single-layer cloud situations, the retrieved CTPs for oxygen A-band agree well with the CTPs from CALIPSO, which mean difference is within 5 mb in the case study. Under multiple-layer cloud situations, the CTPs derived from EPIC measurements may be larger than the CTPs of high level thin-clouds due to the effect of photon penetration.

Currently, this analytical transfer model method can only retrieve CTP, and it still need cloud pressure thickness as an input parameter. However, in the satellite observations, both CTP and cloud pressure thickness are unknown. The estimation or assumption of cloud pressure

thickness will bring in extra error in CTP retrieval. In the near future, we ~~will do further~~
studiesplan to address this issue.

Acknowledgements and Data

This work was supported partially by NASA's Research Opportunities in Space and Earth Science (ROSES) program element for DSCOVR Earth Science Algorithms managed by Dr. Richard Eckman, by the National Science Foundation (NSF) under contract AGS-1608735; and by the National Oceanic and Atmospheric Administration (NOAA) Educational Partnership Program with Minority Serving Institutions cooperative agreement #NA11SEC4810003.-Dataset of DSCOVR EPIC Level 1B can be found in https://eosweb.larc.nasa.gov/project/dscovr/dscovr_epic_11b_2; dataset of EPIC Level 2 can be found in https://eosweb.larc.nasa.gov/project/dscovr/dscovr_epic_12_cloud_01; dataset of surface albedo from GOME can be found in http://temis.nl/surface/gome2_ler/databases/; dataset of cloud layer data from CALIPSO can be found in https://eosweb.larc.nasa.gov/project/calipso/cal_lid_12_05kmclay_standard_v4_20.

Reference

- Bodhaine, B.A., Wood, N.B., Dutton, E.G. and Slusser, J.R.: On Rayleigh optical depth calculations. *Journal of Atmospheric and Oceanic Technology*, 16(11), pp.1854-1861, 1999.
- Carbajal Henken, C. K., Doppler, L., Lindstrot, R., Preusker, R., and Fischer, J.: Exploiting the sensitivity of two satellite cloud height retrievals to cloud vertical distribution, *Atmos. Meas. Tech.*, 8, 3419–3431, <https://doi.org/10.5194/amt-8-3419-2015>, 2015.
- Chandrasekhar, S.: Radiative transfer. Dover, New York, 1960.
- Chou, M.D. and Kouvaris, L.: Monochromatic calculations of atmospheric radiative transfer due to molecular line absorption. *Journal of Geophysical Research: Atmospheres*, 91(D3), pp.4047-4055, 1986.
- Clough, S. A., Shephard, M. W., Mlawer, E. J., Delamere, J. S., Iacono, M. J., Cady-Pereira, K., Boukabara, S., and Brown, P.D.: Atmospheric radiative transfer modeling: a summary of the AER codes, *Short Communication, J. Quant. Spectrosc. Ra.*, 91,233–244, 2005.
- Daniel, J.S., Solomon, S., Miller, H.L., Langford, A.O., Portmann, R.W. and Eubank, C.S.: Retrieving cloud information from passive measurements of solar radiation absorbed by molecular oxygen and O2-O2. *Journal of Geophysical Research: Atmospheres*, 108(D16), 2003.
- Dannenberg, Roger B.: Interpolation error in waveform table lookup, In *Proceedings of the International Computer Music Conference. San Francisco: International Computer Music Association*, 1998.
- Davis, A.B., Merlin, G., Cornet, C., Labonnote, L.C., Riédi, J., Ferlay, N., Dubuisson, P., Min, Q., Yang, Y. and Marshak, A.: Cloud information content in EPIC/DSCOVR's oxygen A-and B-band channels: An optimal estimation approach. *Journal of Quantitative Spectroscopy and Radiative Transfer*, 216, pp.6-16, 2018a.

716 Davis, A.B., Ferlay, N., Libois, Q., Marshak, A., Yang, Y. and Min, Q.: Cloud information
 717 content in EPIC/DSCOVR's oxygen A-and B-band channels: A physics-based approach. *Journal*
 718 *of Quantitative Spectroscopy and Radiative Transfer*, 220, pp.84-96, 2018b.

719 Davis, A.B. and Marshak, A.: Space-time characteristics of light transmitted through dense
 720 clouds: A Green's function analysis. *Journal of the atmospheric sciences*, 59(18), pp.2713-2727,
 721 2002.

722 Duan, M., Min, Q. and Li, J.: A fast radiative transfer model for simulating high-resolution
 723 absorption bands. *Journal of Geophysical Research: Atmospheres*, 110(D15), 2005.

724 Ferlay, N., Thieuleux, F., Cornet, C., Davis, A.B., Dubuisson, P., Ducos, F., Parol, F., Riédi, J.
 725 and Vanbauce, C.: Toward new inferences about cloud structures from multidirectional
 726 measurements in the oxygen A band: middle-of-cloud pressure and cloud geometrical thickness
 727 from POLDER-3/PARASOL. *Journal of Applied Meteorology and Climatology*, 49(12),
 728 pp.2492-2507, 2010.

729 Fischer, J. and Grassl, H.: Detection of cloud-top height from backscattered radiances within the
 730 oxygen A band. Part 1: Theoretical study. *Journal of Applied Meteorology*, 30(9), pp.1245-1259,
 731 1991.

732 [Gastellu-Etchegorry, J.P., Gascon, F. and Esteve, P.: An interpolation procedure for generalizing](#)
 733 [a look-up table inversion method. *Remote Sensing of Environment*, 87\(1\), pp.55-71, 2003.](#)

734 [Gelaro, R., McCarty, W., Suárez, M.J., Todling, R., Molod, A., Takacs, L., Randles, C.A.,](#)
 735 [Darmenov, A., Bosilovich, M.G., Reichle, R. and Wargan, K.: The modern-era retrospective](#)
 736 [analysis for research and applications, version 2 \(MERRA-2\). *Journal of Climate*, 30\(14\),](#)
 737 [pp.5419-5454, 2017.](#)

738 [Geogdzhayev, I. and Marshak, A.: Calibration of the DSCOVR EPIC visible and NIR channels](#)
 739 [using MODIS Terra and Aqua data and EPIC lunar observations. *Atmos. Meas. Tech.* 11, 359 -](#)
 740 [368, <https://doi.org/10.5194/amt-11-359-2018>, 2018](#)

741 Gordon, I.E., Rothman, L.S., Hill, C., Kochanov, R.V., Tan, Y., Bernath, P.F., Birk, M., Boudon,
 742 V., Campargue, A., Chance, K.V. and Drouin, B.J.: The HITRAN2016 molecular spectroscopic
 743 database. *Journal of Quantitative Spectroscopy and Radiative Transfer*, 203, pp.3-69, 2017.

744 Holdaway, D. and Yang, Y.: Study of the effect of temporal sampling frequency on DSCOVR
 745 observations using the GEOS-5 nature run results (Part II): Cloud Coverage. *Remote*
 746 *Sensing*, 8(5), p.431, 2016.

747 Ishimaru, A.: Wave propagation and scattering in random media. Wiley-IEEE-Press, New York,
 748 1999.

749 Irvine, W. M: The formation of absorption bands and the distribution of photon optical paths in a
 750 scattering atmosphere. *Bull. Astron. Inst. Neth.*, 17, 266–279, 1964.

751 Ivanov, V. V., and S. D. Gutshabash, 1974: Propagation of brightness wave in an optically thick
 752 atmosphere. *Phys. Atmos. Okeana*, **10**, 851–863.

Koelemeijer, R.B.A., Stammes, P., Hovenier, J.W. and Haan, J.D.: A fast method for retrieval of cloud parameters using oxygen A band measurements from the Global Ozone Monitoring Experiment. *Journal of Geophysical Research: Atmospheres*, 106(D4), pp.3475-3490, 2001.

Kokhanovsky, A. A. and Rozanov, V. V.: The physical parameterization of the top of-atmosphere reflection function for a cloudy atmosphere-underlying surface system: the oxygen A-band case study. *Journal of Quantitative Spectroscopy and Radiative Transfer*, 85, 35–55, doi:10.1016/S0022-4073(03)00193-6, 2004.

Kokhanovsky, A. A., Rozanov, V. V., Zege, E. P., Bovesmann, H., and Burrows, J. P.: A semi analytical cloud retrieval algorithm using backscattered radiation in 0.4–2.4 μm spectral region, *J.Geophys. Res.*, 108, 4008, doi:10.1029/2001JD001543, 2003.

Kuze, A. and Chance, K.V.: Analysis of cloud top height and cloud coverage from satellites using the O₂ A and B bands. *Journal of Geophysical Research: Atmospheres*, 99(D7), pp.14481-14491, 1994.

Lelli L, Kokhanovsky, A.A., Rozanov, V.V., Vountas M., and Burrows, J.P.: Linear trends in cloud top height from passive observations in the oxygen A-band, *Atmospheric Chemistry and Physics*, 14, 5679-5692, doi:10.5194/acp-14-5679-2014, 2014.

Lelli L, Kokhanovsky, A.A., Rozanov, V.V., Vountas M., Sayer, A.M., and Burrows, J.P.: Seven years of global retrieval of cloud properties using space-borne data of GOME, *Atmospheric Measurement Techniques*, 5, 1551-1570, doi:10.5194/amt-5-1551-2012, 2012.

Loyola, D. G., Gimeno García, S., Lutz, R., Argyrouli, A., Romahn, F., Spurr, R. J. D., Pedernana, M., Doicu, A., Molina García, V., and Schüssler, O.: The operational cloud retrieval algorithms from TROPOMI on board Sentinel-5 Precursor, *Atmos. Meas. Tech.*, 11, 409–427, <https://doi.org/10.5194/amt-11-409-2018>, 2018.

Marshak, A., and Davis, A. (Eds.): 3D radiative transfer in cloudy atmospheres. Springer Science & Business Media, 2005.

Marshak, A., Herman, J., Adam, S., Carn, S., Cede, A., Geogdzhayev, I., Huang, D., Huang, L.K., Knyazikhin, Y., Kowalewski, M. and Krotkov, N.: Earth observations from DSCOVR EPIC instrument. *Bulletin of the American Meteorological Society*, 99(9), pp.1829-1850, 2018.

Meyer, K., Yang, Y. and Platnick, S.: Uncertainties in cloud phase and optical thickness retrievals from the Earth Polychromatic Imaging Camera (EPIC). *Atmospheric measurement techniques*, 9(4), p.1785, 2016.

Min, Q. and Harrison, L.C.: Retrieval of atmospheric optical depth profiles from downward-looking high-resolution O₂ A-band measurements: Optically thin conditions. *Journal of the atmospheric sciences*, 61(20), pp.2469-2477, 2004.~~Min, Q.-L., Harrison, L.C., Kiedron, P., Berndt, J. and Joseph, E.: A high-resolution oxygen A-band and water vapor-band spectrometer. *Journal of Geophysical Research: Atmospheres*, 109(D2), 2004.~~

Min, Q., Yin, B., Li, S., Berndt, J., Harrison, L., Joseph, E., Duan, M. and Kiedron, P.: A high-resolution oxygen A-band spectrometer (HABS) and its radiation closure. *Atmospheric Measurement Techniques*, 7(6), pp.1711-1722, 2014.

O'brien, D.M. and Mitchell, R.M.: Error estimates for retrieval of cloud-top pressure using absorption in the A band of oxygen. *Journal of Applied Meteorology*, 31(10), pp.1179-1192, 1992.

Pandey, P., Ridder, K.D., Gillotay, D. and Van Lipzig, N.P.M.: Estimating cloud optical thickness and associated surface UV irradiance from SEVIRI by implementing a semi-analytical cloud retrieval algorithm. *Atmospheric Chemistry and Physics*, 12(17), pp.7961-7975, 2012.

[Preusker, R. and Lindstrot, R.: Remote Sensing of Cloud-Top Pressure Using Moderately Resolved Measurements within the Oxygen A Band-A Sensitivity Study, J. Appl. Meteorol. Clim., 48, 1562–1574, 2009.](#)

[Richardson, M. and Stephens, G.L.: Information content of OCO-2 oxygen A-band channels for retrieving marine liquid cloud properties. *Atmospheric Measurement Techniques*, 11\(3\), pp.1515-1528, 2018.](#)

[Rozanov, V. V. and Kokhanovsky, A. A.: Semianalytical cloud retrieval algorithm as applied to the cloud top altitude and the cloud geometrical thickness determination from top-of-atmosphere reflectance measurements in the oxygen A band, *Journal of Geophysical Research: Atmospheres*, 109, 4070, doi:10.1029/2003JD004104, 2004.](#)

Schuessler, O., Rodriguez, D.G.L., Doicu, A. and Spurr, R.: Information Content in the Oxygen A-Band for the Retrieval of Macrophysical Cloud Parameters. *IEEE Transactions on Geoscience and Remote Sensing*, 52(6), pp.3246-3255, 2013.

[Seager, S., Turner, E.L., Schafer, J. and Ford, E.B.: Vegetation's red edge: a possible spectroscopic biosignature of extraterrestrial plants. *Astrobiology*, 5\(3\), pp.372-390, 2005.](#)

Stamnes, K., Tsay, S.C., Wiscombe, W. and Jayaweera, K.: Numerically stable algorithm for discrete-ordinate-method radiative transfer in multiple scattering and emitting layered media. *Applied optics*, 27(12), pp.2502-2509, 1988.

Thomas, G. E., and Stamnes, K.: Radiative transfer in the atmosphere and ocean. Cambridge University Press, Cambridge, 2002.

Tilstra, L.G., Wang, P. and Stamnes, P.: Surface reflectivity climatologies from UV to NIR determined from Earth observations by GOME-2 and SCIAMACHY. *Journal of Geophysical Research: Atmospheres*, 122(7), pp.4084-4111, 2017.

Van de Hulst, H. C.: Multiple Light Scattering: Tables, Formulas, and Applications. Academic Press, 299 pp, 1980.

Van de Hulst H.C.: Multiple light scattering: tables, formulas, and applications. Elsevier; 2012.

[Yamamoto, G. and Wark, D. Q.: Discussion of letter by A. Hanel: determination of cloud altitude from a satellite, *Journal of Geophysical Research: Atmospheres*, 66, 3596, 1961.](#)

[Vaughan, M.A., Young, S.A., Winker, D.M., Powell, K.A., Omar, A.H., Liu, Z., Hu, Y. and Hostetler, C.A.: November. Fully automated analysis of space-based lidar data: An overview of the CALIPSO retrieval algorithms and data products. In *Laser radar techniques for atmospheric sensing* \(Vol. 5575, pp. 16-30\). International Society for Optics and Photonics, 2004.](#)

830 Yang, Y., Marshak, A., Mao, J., Lyapustin, A. and Herman, J.: A method of retrieving cloud top
831 height and cloud geometrical thickness with oxygen A and B bands for the Deep Space Climate
832 Observatory (DSCOVR) mission: Radiative transfer simulations. *Journal of Quantitative*
833 *Spectroscopy and Radiative Transfer*, 122, pp.141-149, 2013.

834 Yang, Y., Meyer, K., Wind, G., Zhou, Y., Marshak, A., Platnick, S., Min, Q., Davis, A.B.,
835 Joiner, J., Vasilkov, A. and Duda, D.: Cloud products from the Earth Polychromatic Imaging
836 Camera (EPIC): algorithms and initial evaluation. *Atmospheric Measurement Techniques*, 12(3),
837 2019.
838
839